



North Lyon County Fire Protection District

195 East Main Street

Fernley, Nevada 89408

District Office (775) 575-3310 Fax (775) 575-3314

Brian Bunn, Fire Chief

Notice of Meeting

Date: November 14, 2024

Time: 6:00 p.m. or 1800 hours

Location: 195 East Main Street

Fernley NV 89408

Directors

Paul Murphy, Chairman Jay Rodriguez, Director
Michael Toombs, Vice Chair Debbie Skinner, Director
Harry Wheeler, Sec/Treasurer

NLCFPD Board of Directors Meeting Agenda

1. Call to Order, Pledge of Allegiance and Moment of Silence

Public Comment: No action will be taken on any subject during public participation until it has been properly placed on an Agenda for a subsequent meeting. Public comment is limited to three (3) minutes per person. Unused time may not be reserved by the speaker, nor allocated to another speaker. The public may comment on any matter that is not specifically included on an agenda as an action item or comment on a specific agenda item. Items not included on the agenda cannot be acted upon other than to place them on a future agenda.

3. CONSENT AGENDA* All matters listed under the consent agenda are considered routine and may be acted upon by the Board of North Lyon County Fire Protection District with one action, and without an extensive hearing. Any member of the Board or any citizen may request that an item be taken from the consent agenda, discussed, and acted upon separately during this meeting.

3a. Review and Approval of Board Agenda

3b. Review & Approve Board Minutes

3c. Review of Summary Reports

Discussion and possible action regarding Revenue and Expenditures*

4. 4a. Enterprise Fund Revenue and Expenditures

4b. General Fund Revenue and Expenditures

5. Discussion and possible action regarding upcoming vacant Board of Director Position*

6. Discussion and possible action regarding proposal from DiMartino Associates for 2025 calendar year health benefit package*

7. Discussion and possible action regarding proposal from Braun Northwest, Inc. for 2026 ambulance purchase*

8. Discussion and possible action to adopt North Lyon Fire as a trade name and do business as North Lyon Fire while maintaining North Lyon County Fire Protection District as legal business name*

9. Fire Chief Report

10. Reports of Directors, Staff, Volunteers, Local 4547, City of Fernley

- 11.** Public Comment No action will be taken on any subject during public participation until it has been properly placed on an Agenda for a subsequent meeting. Public comment is limited to three (3) minutes per person. Unused time may not be reserved by the speaker, nor allocated to another speaker. The public may comment on any matter that is not specifically included on an agenda as an action item or comment on a specific agenda item. Items not included on the agenda cannot be acted upon other than to place them on a future agenda.

12. Adjourn

- Notices:**
1. The Board may act on any of the “*” items.
 2. At any time, the order of agenda items may be changed, removed, or combined with another item with Board consensus.
 3. The Board may limit the amount of time for public comments based upon the number of speakers on the same subject.
 4. North Lyon Fire will make reasonable efforts to assist and accommodate individuals with disabilities desiring to attend the meeting. Please contact the District Office at (775) 575-3310 in advance so arrangements can be made.
 5. Staff reports and supporting material for the meeting are available at the North Lyon County Fire Admin Office, 195 E. Main Street, Fernley NV 89408, by calling the Admin Office at (775)575-3310 or the District's website at www.northlyonfire.org, pursuant to NRS 241.020.

CERTIFICATE OF POSTING

I, Kasey Miller, do hereby certify that I posted or caused to be posted, a copy of this agenda at the following locations on or before 9:00 a.m. November 8, 2024:

1. North Lyon County Fire Protection District, 195 East Main Street, Fernley, Nevada 89408
2. U.S. Post Office, Hardie Lane Fernley, Nevada 89408
3. City of Fernley – City Hall, 595 Silverlance Blvd, Fernley, Nevada 89408
4. Lyon County Manager, 27 S. Main Street, Yerington, Nevada 89447
5. Nevada Public Notice Website, www.notice.nv.gov

Distribution: To ALL persons requesting notification.

North Lyon County Fire Protection District
195 East Main Street
Fernley, Nevada 89408
District Office (775) 575-3310 District Fax (775) 575-3314

MINUTES

NORTH LYON COUNTY FIRE PROTECTION DISTRICT

October 16, 2024

1. Call to Order

The meeting was called to order at 1815.

Directors present included Paul Murphy, Michael Toombs, Jay Rodriguez, and Debbie Skinner. Director Wheeler was absent.

The Pledge of Allegiance was led by Director Toombs. A moment of silence followed.

2. Public Comment: No action will be taken on any subject during public participation until it has been properly placed on an Agenda for a subsequent meeting. Public comment is limited to three (3) minutes per person. Unused time may not be reserved by the speaker, nor allocated to another speaker. The public may comment on any matter that is not specially included on an agenda as an action item or comment on a specific agenda item. Items not included on the agenda cannot be acted upon other than to place them on a future agenda.

None.

3. CONSENT AGENDA* All matters listed under the consent agenda are considered routine and may be acted upon by the Board of North Lyon County Fire Protection District with one action, and without an extensive hearing. Any member of the Board or any citizen may request that an item be taken from the consent agenda, discussed, and acted upon separately during this meeting.

3a. Review and approve of Board Agenda

3b. Review & Approve Board Minutes

3c. Review of Summary Reports

Chairman Murphy recapped that we tabled 3b and 3c from the last meeting. He stated that we do not have that at this meeting but will have it for the next meeting to get it approved. Director Skinner asked if the Summary Reports were in the packet, and Chairman Murphy stated that we only had the minutes and no Summary Reports for this meeting. He added that we would only be approving the agenda and last meetings board minutes.

North Lyon County Fire Protection District

195 East Main Street

Fernley, Nevada 89408

District Office (775) 575-3310 District Fax (775) 575-3314

Director Skinner made a motion to approve 3a. and 3b.

Director Rodriguez seconded the motion.

The motion carries as follows: 4-0-1

Murphy	Aye	Wheeler	Absent
Toombs	Aye		
Rodriguez	Aye		
Skinner	Aye		

Chairman Murphy stated that we will table 3c. and include that with two meetings ago and get it all buttoned up.

4. Discussion and possible action regarding Revenues and Expenditures*

4a. Enterprise Revenue and Expenditures

4b. General Fund and Expenditures

Chairman Murphy stated that we do not have a report for this month, and we will table 4a and 4b, to be included in our next meeting for approval.

5. Discussion and possible action regarding Chief Bunn's 6-month evaluation*

Chairman Murphy explained that part of Chief Bunn's contract was to give him interval evaluations on a 3-month basis. He shared that 3 evaluations were turned in. All Board members discussed and agreed to wait until all 5 evaluations are turned in to review them all at the next meeting. Chairman Murphy stated that he is very satisfied with the direction that we are going, and he appreciates him being here. Chairman Murphy added that we will table #5 and move it to next month.

6. Discussion and possible action regarding contract with Gary Cardinal to perform in investigation into employee complaints*

Attorney, Rebecca Bruch stated that 2 employee complaints have come in, and they are 2 separate claims. She has determined that we need an outside investigator, per our regular protocol. She added that Mr. Cardinal has done some investigations, and he is willing to take on these 2 investigations. Mrs. Bruch stated that she has provided his contract for review and approval.

Director Rodriguez made a motion to approve the contract for the complaint dated October 1, 2024, and the contract for the complaint dated October 2, 2024.

Director Toombs seconded the motion.

North Lyon County Fire Protection District
195 East Main Street
Fernley, Nevada 89408
District Office (775) 575-3310 District Fax (775) 575-3314

Murphy	Aye	Wheeler	Absent
Rodriguez	Aye		
Toombs	Aye		
Skinner	Aye		

7. Fire Chief Report

First Due Software

Chief Bunn shared that First Due Software is up and running as of October 10th at 2359 hours. Everything is working well, and we may have to fine-tune some things to fit the district's needs.

Ambulance Billing

He stated that Sharp Ambulance billing is up and running as of October 10th and all the bugs have been worked out, prior to them launching. We hope to get a quarter's worth of billing cycle through, to be able to evaluate a lot further.

New Ambulance

Chief Bunn added that North Lyon Fire was awarded \$300,000.00 from the American Rescue Plan Act (ARPA). He stated that Labor and management are finalizing a draft contract for a new Type I ambulance, that must be completed by December 31st with a signed contract to the vendor. He added that we will be bringing a contract in November for Board approval. Looking at delivery for the Fiscal Year 2026-27. That was done tactically because it is going to be a little over \$300,000.00.

Firefighter Vacancy

Chief Bunn stated that there was 1 Firefighter vacancy, and Spencer York was offered the position, and he accepted the position. His official start date will be November 1, 2024. We are excited to have him, and he has been a long-time reserve. He added that the staff says he is fantastic to work with, and we are all excited to work with him.

Communications/Dispatch

Chief Bunn has been working with all 4 Fire Chiefs in Lyon County, and Lieutenant Willy from the sheriff's office. He stated that we are going to do intent-based planning to develop our end state to improve our communications, and safety, and reduce our response times.

Health Insurance

We have it down to IAFF health and wellness. It is nationwide health, vision, and dental. He stated that we are still waiting on the prices but anticipate having that for the Board in November for approval.

North Lyon County Fire Protection District
195 East Main Street
Fernley, Nevada 89408
District Office (775) 575-3310 District Fax (775) 575-3314

Labor/Management

Chief Bunn stated that all employees' sick leave and annual leave bank and accrual rates have been updated to meet the current CBA. He added that all employees are at their appropriate step per the CBA. However, we are still lacking the funds to get the backpay portion of all of those steps. As the revenues come in, we will be making our employees whole.

Breast Cancer Awareness

Chief Bunn shared that Mrs. Becki Howlett helped with getting T-shirts made, and he thanked everybody who purchased them. He stated that we made over \$1,100.00 and that money has been placed into an account for future breast cancer events with NLCFPD. He added that his plan for next year is to honor our local victims of breast cancer survivors and wrap one of our fire engines in a pink wrap.

2024 Fire Season

Chief Bunn shared that we have had resources on fires nationally in the western states for just over 100 days and he is anticipating \$320,000.00 to \$350,000.00 in revenues. That is in addition to back pay for all of the wages. He mentioned that the Northern Nevada Fire Chiefs Association has decided to follow the Nevada State Forestry's recommendation on fire seasons. We have not allowed open burning in the district, but we are going with the state of Nevada and that will be November 1, 2024.

Stakeholder Relations

Chief Bunn shared that over the last month, he was able to meet with Assemblyman Gregory Koenig, City of Fernley, Mayor Neil McIntyre, and Councilmember Ryan Hanan. He added that these are opportunities to make our fire district better and that Mr. Koenig is very conservative and helped him out a lot. He stated that the councilman and the mayor want complete control of the fire department. He expressed that they are one of the only cities of the Union of the U.S. that is getting free emergency services, and they are not paying their fair share. Chief Bunn told them that he is looking for a long-term agreement with an end state. He added that the mayor was open to the idea, and he told him that as in good faith, he is looking forward to having a conversation to build an agreement and the city funding a minimum of 2 positions beginning July 1st of the next Fiscal Year. He added that the mayor reassured him that he believes that they should be funding North Lyon Fire for services.

Incident Update

Monday, September 23rd, North Lyon Fire responded to a fully involved residential structure fire on Woodchuck Road. Upon arrival, an elderly lady was being extracted from a window in her home by 2 bystanders. Chief Bunn stated that we have ordered some awards, and when they are done, he would like to invite the 2 individuals before the Board to recognize them.

North Lyon County Fire Protection District
195 East Main Street
Fernley, Nevada 89408
District Office (775) 575-3310 District Fax (775) 575-3314

Future Fire Chief

Chief Bunn has hit the 6 months of his 1-year Interim Fire Chief contract and mentioned that the Board should discuss and determine the residency requirements for the position. He stated that he has no desire to relocate, and if that is something that the Board wishes, he recommends that they start doing a national search now.

Legal Name vs. Trade Name

North Lyon County Fire Protection District is our legal governing name. Chief Bunn explained that a trade name is what it presents to the public. Our uniforms and trucks already say North Lyon Fire, and he would like to formally adopt a trade name of North Lyon Fire and keep our business name as North Lyon County Fire Protection District. He stated that he would bring that up as an agenda item in the future.

Upcoming Events

10/24 - Fernley Boys & Girls Club Trunk or Treat 1700-1900
10/26 - Biggest Little Radio Trunk or Treat 1500-1700
10/31 - Cottonwood Elementary Trunk or Treat 830-1230
10/31 - City of Fernley Spooktacular Trunk or Treat 1600- 1900

Chief Bunn mentioned the Vials of Life and explained that he is going to build a flyer and post it on social media and have the public come to the station. He likes the idea of doing blood pressure checks and handing them out during that time.

Director Rodriguez asked about the City of Fernley Public Works terminating services.

Chief Bunn explained that a tear-down is when a structure fire has to be pulled apart for public safety. Generally, the city has always helped with heavy equipment and an operator. There was a request made to the city and it was denied, but thankfully Lyon County Emergency Management stepped in and sent us equipment and an operator.

Chief Bunn included that the city has decided that they are no longer going to do any services beyond basic preventative maintenance. He added that he is extremely disappointed in the lack of cooperation.

Director Skinner asked what basic services were and Chief Bunn responded that it was an oil change, tire rotation, windshield wipers, and maybe a fuse. Chairman Murphy asked if there was a contract, and Chief Bunn is not 100% sure. Director Skinner wanted to confirm that the City of Fernley was providing maintenance for equipment. Chief Bunn confirmed that they have done additional services and are currently replacing a sensor in the fuel truck of a fuel tank, but that will no longer be taken care of by the city.

Director Skinner mentioned getting a letter from the City of Fernley stating that they are terminating that.

North Lyon County Fire Protection District

195 East Main Street

Fernley, Nevada 89408

District Office (775) 575-3310 District Fax (775) 575-3314

Chief Bunn stated that if there is some sort of agreement that turns up, it will probably say that either party can terminate or amend. This was brought to his attention 48 hours ago and he will be doing his research to get more information.

Mrs. Becki Howlett wanted to clarify that the Cottonwood celebration scheduled for October 31st is for their Nevada Day Celebration.

8. Reports of Directors, Fire Marshal, Staff, Volunteers, Local 4547, City of Fernley

Director Skinner thanked Chief Bunn for doing the research for the Vials of Life, and the Fernley Senior Advisory Committee is always looking for someone to present. Providing them with a flyer would be nice. She added that she liked seeing the Breast Cancer Tee shirts available to the public. Mrs. Skinner asked Chief Bunn if he had heard from The Rotary Club regarding the Thanksgiving Dinner and Breakfast with the Grinch, and he responded that he had not heard from anybody.

Local 4547 President, Joe Mendoza shared that he heard that it will be held at the Boys and Girls Club this year, and they are looking to use the new Community Center in the years to come. Director Skinner asked if both events would be held there, and Mr. Mendoza stated that he was only aware of Breakfast with the Grinch. Chairman Murphy added that he thinks we should reach out to the Rotary Club, so we know if we need to prepare for the event. Director Skinner added that she also thinks it may reassure them that we are willing to work with them whatever their decision may be.

Director Rodriguez - None.

Director Toombs - None.

Chairman Murphy shared that in regards to the Interim Chief contract the residency requirement is nice, but we've maintained a residency requirement with fire chiefs in the past and we have gotten less qualified chiefs. We currently have someone more than qualified to continue on, and I would like to see this happen. He added that he would like to see this discussion in November whether we want to go forward with that process or if we want to continue with the evaluations and start talking about an extension.

Chief Bunn stated that he still has a son in high school and retirement still coming. To make that much of a change for 4 to 6 years is big.

Fire Marshall - None.

Staff - None.

Support Staff - Captain Dan Hiles stated that there are a few people going through trainings. We had a couple volunteers go to the Woodchuck Fire, and to the trash fire out on Highway 80. He

North Lyon County Fire Protection District

195 East Main Street

Fernley, Nevada 89408

District Office (775) 575-3310 District Fax (775) 575-3314

stated that they like to help out as much as they can and will also be helping with the October events coming up.

Chief Bunn added that the Washoe County Commissioners and Truckee Meadows Fire hosted a Night of Gratitude. He stated that Mrs. Wendy Sherfy covered at the station so some of the on-duty staff could go be a part of the event.

Chairman Murphy asked what the numbers are at for the Support Staff, and Captain Hiles responded that there are 6 certified firefighters and EMTs. We have 7 recruits in training right now, and 6 members in Rehab. Chairman Murphy asked if they could include that information in their monthly report, so everyone has an update.

Chief Bunn added that we will not be taking on any new additional support members due to the lack of funding.

Local 4547, Union President, Joe Mendoza shared that we are getting ready to do the Annual Turkey drive for the Living Faith Food Bank. Any turkeys that are collected, local 4547 will match, and this is the 4th or 5th year participating in this event. He added that last year there were 125 turkeys. Mr. Mendoza added that the Turkey Drive will begin on November 1st.

Mr. Mendoza added that they were at Black Bear Diner over the weekend for their Make a Wish Foundation event.

City of Fernley - None.

9. Public Comment: No action will be taken on any subject during public participation until it has been properly placed on an Agenda for a subsequent meeting. Public comment is limited to three (3) minutes per person. Unused time may not be reserved by the speaker, nor allocated to another speaker. The public may comment on any matter that is not specially included on an agenda as an action item or comment on a specific agenda item. Items not included on the agenda cannot be acted upon other than to place them on a future agenda.

Mrs. Becki Howlett shared that this year's Christmas party will be on Saturday, December 14, 2024, at the Senior Center. Cocktails start at 5 p.m., and dinner will be served at 6 p.m.

Mrs. Linda Carr asked the Board if the district is going to be participating in the City of Fernley Spooktacular. Chief Bunn responded that you cannot use taxpayers' dollars for that event. Mrs. Carr asked if the department would like candy donations, and he responded, yes.

10. Adjournment*

Chairman Murphy adjourned at 1853.

North Lyon County Fire Protection District

195 East Main Street

Fernley, Nevada 89408

District Office (775) 575-3310 District Fax (775) 575-3314

NOTE(s): All items indicated by an asterisk (“*”) were Action Items. A complete and detailed record of this meeting was recorded on Micro SD Recorder October 16, 2024

Respectfully Submitted by:

Shannon Moffett, Administrative Assistant
North Lyon County Fire Protection District

November 14, 2024
Date

Approval of Minutes October 16, 2024

	<u>For</u>	<u>Against</u>	<u>Abstain</u>	<u>Absent</u>
___ Approved as Read	___	___	___	___
___ Approved with Corrections	___	___	___	___

Paul Murphy, Chairman
North Lyon County Fire Protection District

November 14, 2024
Date

NILCFPD

Statement of Revenues and Expenditures - Rev Exp VS Budget - Fire 2025 Percentage
From 7/1/2024 Through 6/30/2025

	Current Period Budget - 2025Original	Current Year Actual	Total Budget Variance - 2025Original	Percent Total Budget Remaining - 2025Original
REVENUES				
Taxes				
Ad Valorem Taxes	3,048,223.00	928,326.40	(2,119,896.60)	(69.55)%
Consolidated Taxes	244,746.00	61,154.54	(183,591.46)	(75.01)%
Total Taxes	3,292,969.00	989,480.94	(2,303,488.06)	(69.95)%
Other Revenue				
Mutual Aid	350,000.00	49,978.02	(300,021.98)	(85.72)%
Inspections	5,000.00	2,430.00	(2,570.00)	(51.40)%
Hazmat Permits	10,000.00	0.00	(10,000.00)	(100.00)%
Fire and Safety Reviews	120,000.00	71,225.66	(48,774.34)	(40.65)%
Operational Permits	6,000.00	160.00	(5,840.00)	(97.33)%
Cost Recovery	0.00	3,012.32	3,012.32	0.00%
Ambulance Fees	20,000.00	165,434.40	145,434.40	727.17%
Miscellaneous Revenue	10,000.00	500.00	(9,500.00)	(95.00)%
Total Other Revenue	521,000.00	292,740.40	(228,259.60)	(43.81)%
Total REVENUES	3,813,969.00	1,282,221.34	(2,531,747.66)	(66.38)%
EXPENDITURES				
Personnel Expenses				
Salaries and Wages	1,194,000.00	400,538.21	793,461.79	66.45%
Temporary Salaries	137,000.00	0.00	137,000.00	100.00%
Overtime	200,000.00	270,094.66	(70,094.66)	(35.05)%
Holiday	100,000.00	11,535.38	88,464.62	88.46%
Uniforms	20,000.00	1,563.97	18,436.03	92.18%
Employee Physicals	15,000.00	8,855.00	6,145.00	40.97%
PERS Retirement	597,000.00	39,130.71	557,869.29	93.45%
Employer Taxes and Fees	39,000.00	10,699.53	28,300.47	72.57%
Workers Comp	242,000.00	49,036.12	192,963.88	79.74%
Health Insurance	300,000.00	40,599.58	259,400.42	86.47%
Cadets	10,000.00	6,308.00	3,692.00	36.92%
Total Personnel Expenses	2,854,000.00	838,361.16	2,015,638.84	70.63%
Office Operating Expenses				
Office Supplies and Postage	12,000.00	1,923.26	10,076.74	83.97%
Office Equipment & IT	17,000.00	2,400.00	14,600.00	85.88%
Books and Publications	6,000.00	0.00	6,000.00	100.00%

NILCFPD

Statement of Revenues and Expenditures - Rev Exp VS Budget - Fire 2025 Percentage
From 7/1/2024 Through 6/30/2025

	Current Period Budget - 2025Original	Current Year Actual	Total Budget Variance - 2025Original	Percent Total Budget Remaining - 2025Original
Fire Prevention Public Education	6,000.00	300.00	5,700.00	95.00%
Insurance	35,500.00	35,352.26	147.74	0.42%
Professional Fees	100,000.00	42,796.60	57,203.40	57.20%
Dues	2,500.00	100.00	2,400.00	96.00%
Travel	2,500.00	0.00	2,500.00	100.00%
Wildland Travel	75,000.00	0.00	75,000.00	100.00%
Total Office Operating Expenses	256,500.00	82,872.12	173,627.88	67.69%
Personnel Operating Expenses				
Training	12,500.00	0.00	12,500.00	100.00%
Recruitment and Retention	5,000.00	613.00	4,387.00	87.74%
Safety Equipment	5,000.00	0.00	5,000.00	100.00%
Turnouts	17,500.00	2,372.55	15,127.45	86.44%
Total Personnel Operating Expenses	40,000.00	2,985.55	37,014.45	92.54%
Vehicle Operating Expenses				
Heavy Apparatus	50,000.00	11,542.16	38,457.84	76.92%
Light Fleet	10,000.00	6,232.78	3,767.22	37.67%
Wildland Fleet	10,000.00	720.00	9,280.00	92.80%
Vehicle Fuel	35,000.00	14,490.15	20,509.85	58.60%
Total Vehicle Operating Expenses	105,000.00	32,985.09	72,014.91	68.59%
Equipment Supplies Operating Expenses				
Medical Supplies	0.00	20,231.12	(20,231.12)	0.00%
Equipment Non Capital	5,000.00	11,712.00	(6,712.00)	(134.24)%
Communications	12,500.00	2,027.77	10,472.23	83.78%
Operating Supplies	0.00	443.60	(443.60)	0.00%
Small Equipment R & M	15,000.00	(1,714.03)	16,714.03	111.43%
Total Equipment Supplies Operating Expenses	32,500.00	32,700.46	(200.46)	(0.62)%
Station Operating Expenses				
Station Repair & Maintenance 61	32,000.00	5,629.68	26,370.32	82.41%
Utilities 61	34,000.00	7,601.24	26,398.76	77.64%
Total Station Operating Expenses	66,000.00	13,230.92	52,769.08	79.95%
Other Non Operating Expenses				
Capital Outlay	20,000.00	0.00	20,000.00	100.00%
Debt Payments	0.00	10,500.00	(10,500.00)	0.00%

NLCFPD

Statement of Revenues and Expenditures - Rev Exp VS Budget - Fire 2025 Percentage
From 7/1/2024 Through 6/30/2025

	Current Period Budget - 2025Original	Current Year Actual	Total Budget Variance - 2025Original	Percent Total Budget Remaining - 2025Original
Lease Payments	186,000.00	0.00	186,000.00	100.00%
Total Other Non Operating Expenses	206,000.00	10,500.00	195,500.00	94.90%
Total EXPENDITURES	3,560,000.00	1,013,635.30	2,546,364.70	71.53%
REVENUES IN EXCESS OF EXPENDITURES	253,969.00	268,586.04	14,617.04	5.76%

NILCFPD

Statement of Revenues and Expenditures - Rev Exp VS Budget - Ambulance 2025 Percentage
From 7/1/2024 Through 6/30/2025

	Current Period Budget - 2025Original	Current Year Actual	Total Budget Variance - 2025Original	Percent Total Budget Remaining - 2025Original
REVENUES				
Other Revenue				
Mutual Aid	0.00	299,040.41	299,040.41	0.00%
Cost Recovery	0.00	676.46	676.46	0.00%
Ambulance Fees	1,200,000.00	184,639.68	(1,015,360.32)	(84.61)%
GEMT Ambulance	800,000.00	(5,790.00)	(805,790.00)	(100.72)%
Ambulance Subscription	8,000.00	6,766.46	(1,233.54)	(15.42)%
Miscellaneous Revenue	0.00	1,004.83	1,004.83	0.00%
Total Other Revenue	2,008,000.00	486,337.84	(1,521,662.16)	(75.78)%
Total REVENUES	2,008,000.00	486,337.84	(1,521,662.16)	(75.78)%
EXPENDITURES				
Personnel Expenses				
Salaries and Wages	967,022.00	215,778.21	751,243.79	77.69%
Overtime	61,000.00	135,189.12	(74,189.12)	(121.62)%
Holiday	45,000.00	8,733.60	36,266.40	80.59%
Uniforms	20,000.00	0.00	20,000.00	100.00%
Employee Physicals	12,000.00	9,700.00	2,300.00	19.17%
PERS Retirement	483,511.00	0.00	483,511.00	100.00%
Employer Taxes and Fees	27,000.00	6,556.63	20,443.37	75.72%
Workers Comp	170,500.00	0.00	170,500.00	100.00%
Health Insurance	300,000.00	973.26	299,026.74	99.68%
Total Personnel Expenses	2,086,033.00	376,930.82	1,709,102.18	81.93%
Office Operating Expenses				
Office Supplies and Postage	5,000.00	0.00	5,000.00	100.00%
Office Equipment & IT	13,000.00	0.00	13,000.00	100.00%
Books and Publications	1,500.00	0.00	1,500.00	100.00%
Insurance	35,500.00	0.00	35,500.00	100.00%
Professional Fees	20,000.00	494.21	19,505.79	97.53%
Dues	400.00	0.00	400.00	100.00%
Travel	1,000.00	0.00	1,000.00	100.00%
Total Office Operating Expenses	76,400.00	494.21	75,905.79	99.35%

NLCFPD

Statement of Revenues and Expenditures - Rev Exp VS Budget - Ambulance 2025 Percentage
From 7/1/2024 Through 6/30/2025

	Current Period Budget - 2025Original	Current Year Actual	Total Budget Variance - 2025Original	Percent Total Budget Remaining - 2025Original
Personnel Operating Expenses				
Training	12,500.00	0.00	12,500.00	100.00%
Safety Equipment	1,000.00	0.00	1,000.00	100.00%
Turnouts	17,500.00	0.00	17,500.00	100.00%
Total Personnel Operating Expenses	31,000.00	0.00	31,000.00	100.00%
Vehicle Operating Expenses				
Ambulance Fleet	30,000.00	0.00	30,000.00	100.00%
Vehicle Fuel	60,000.00	0.00	60,000.00	100.00%
Total Vehicle Operating Expenses	90,000.00	0.00	90,000.00	100.00%
Equipment Supplies Operating Expenses				
Medical Supplies	90,000.00	0.00	90,000.00	100.00%
Equipment Non Capital	2,000.00	0.00	2,000.00	100.00%
Communications	12,500.00	0.00	12,500.00	100.00%
Operating Supplies	0.00	35.34	(35.34)	0.00%
Small Equipment R & M	5,000.00	0.00	5,000.00	100.00%
Total Equipment Supplies Operating Expenses	109,500.00	35.34	109,464.66	99.97%
Station Operating Expenses				
Station Repair & Maintenance 61	0.00	89.78	(89.78)	0.00%
Station Repair & Maintenance 62	12,000.00	0.00	12,000.00	100.00%
Utilities 62	16,000.00	0.00	16,000.00	100.00%
Total Station Operating Expenses	28,000.00	89.78	27,910.22	99.68%
Other Non Operating Expenses				
Depreciation	122,000.00	0.00	122,000.00	100.00%
Total EXPENDITURES	2,542,933.00	377,550.15	2,165,382.85	85.15%

NLCFPD

Statement of Revenues and Expenditures - Rev Exp VS Budget - Ambulance 2025 Percentage
From 7/1/2024 Through 6/30/2025

	Current Period Budget - 2025Original	Current Year Actual	Total Budget Variance - 2025Original	Percent Total Budget Remaining - 2025Original
REVENUES IN EXCESS OF EXPENDITURES	(534,933.00)	108,787.69	643,720.69	(120.34)%



North Lyon County Fire Protection District

195 East Main Street

Fernley, Nevada 89408

District Office (775) 575-3310 District Fax (775) 575-3314

www.northlyonfire.org

Brian Bunn, Interim Fire Chief

Directors

Paul Murphy

Mike Toombs

Harry Wheeler

Jay Rodriguez

Debbie Skinner

STAFF REPORT

Board Meeting Date: November 14, 2024

DATE: November 7, 2024
TO: North Lyon County Fire Protection District Board of Directors
FROM: Brian Bunn, Interim Fire Chief
SUBJECT: Recommendation to approve and accept a proposal from DiMartino Associates for the 2025 calendar year health benefits. **FOR POSSIBLE ACTION**

SUMMARY

This item is to approve and accept a proposal from DiMartino Associates for 2025 calendar year health benefits.

PREVIOUS ACTION

No data.

BACKGROUND

Annually, NLCFPD must renew our medical, vision, and dental plans for our employees. Labor and management evaluated and reviewed plans that were both financially reasonable and met the needs of all our employees.

The plan selected is the IAFF Health & Wellness (IAFF HWT) Trust through DiMartino Associates. The IAFF HWT is only available to agencies with IAFF Locals in the United States. Coverage may be extended to non-bargained fire department staff. The trust has over 13,600 members. IAFF HWT annual increase has averaged 4.3% over the last 5 years.

The provider network is the National Blue Cross Blue Shield Plan with an optional Health Savings Account (HSA) for all our staff. The plan includes prescription services, virtual care, and Vision Service Plan (VSP).

Additional benefits include \$20K Life/AD&D Benefit, \$5K Critical Illness Benefit, Orthopedics Stem Cell/PRP, Member Assistance Program, and Transcarent Benefits.

IAFF HWT partners with Progyny to bring Trust Members a comprehensive and inclusive fertility and family building benefit.

After 12 months of participation in the Trust, NLCFPD may Opt-In via a special agreement to bring on-site NFPA 1582/1583 physical examinations and wellness fitness evaluations. The trust

PEOPLE FIRST

North Lyon County Fire Protection District is an Equal Opportunity Employer



North Lyon County Fire Protection District

195 East Main Street

Fernley, Nevada 89408

District Office (775) 575-3310 District Fax (775) 575-3314

www.northlyonfire.org

Brian Bunn, Interim Fire Chief

Directors

Paul Murphy

Mike Toombs

Harry Wheeler

Jay Rodriguez

Debbie Skinner

will pay the full cost of the base exam for each eligible Firefighter. Additional services are available for direct employer pay (ex: heavy metal screening, chest x-ray, etc).

FISCAL IMPACT

This current FY was budgeted for \$600 thousand dollars. Without exact participant numbers, spouses, and/or children, I can anticipate the annual cost to be approximately \$500 thousand dollars.

RECOMMENDATION

Staff recommends the Board of Fire Directors approve and accept a proposal from DiMartino Associates for the 2025 calendar year health benefits

POSSIBLE MOTION

Should the Board agree with the staff's recommendation, a possible motion could be:

"I move to approve and accept a proposal from DiMartino Associates for the 2025 calendar year health benefits."

PEOPLE FIRST

North Lyon County Fire Protection District is an Equal Opportunity Employer



IAFF Health & Wellness Trust

TRUST OVERVIEW

2024

DiMartino Associates

1325 Fourth Avenue | Suite 1705 | Seattle, WA 98101

Tel: (206) 623-2430 or (800) 488-8277

Email: IAFFTrust@dimartino.com



A UNION SPONSORED HEALTH & WELFARE TRUST

FOR FIRE FIGHTERS, BY FIRE FIGHTERS

The IAFF Health & Wellness Trust was created for the sole purpose of providing a fire fighter-centric healthcare solution with our members and their families' interests always top of mind. Everything we do is motivated by our desire to improve the healthcare experience for participating members.



TRUST HISTORY & GOVERNANCE

Founded in 2013 by the Washington State Council of Fire Fighters (WSCFF) to provide access to quality retiree medical.

- Formerly the Northwest Fire Fighters Benefits Trust (NWFFT)

Governance through a Board of thirteen (13) fire fighter Trustees.

Partnership with IAFF beginning in 2022

- Trust now referred to as the “IAFF HWT”
- Trust added four (4) appointed Trustee positions (IAFF DVP, Eastern, Western and At-Large)

Trust Team

- Trust Consultant – DiMartino Associates
- The Trust Office – Vimly Benefit Solutions



PARTICIPATION REQUIREMENTS

- IAFF Participating Local in the US working for a public employer
- Must have collective bargaining or similar due to IRS rules permitting us to operate as a Union Sponsored Health & Welfare Trust under ERISA
- Coverage can be extended to non-bargained fire department staff

2024 TRUST PARTICIPATION

70

Locals

5,500+

Fire Fighters

13,600+

Members

Currently in 12 States:
AK, AZ, CA, CT, ID, IL, KS,
MO, NV, NY, OR, & WA

TRUST RENEWAL HISTORY

Trust went live with a fully-insured, group plan on 1/1/2013

2014 Renewal Action: 8.1%

2015 Renewal Action: 6.9%

2016 Renewal Action: 3.9% - *Trust went self-insured*

2017 Renewal Action: 4.9%

2018 Renewal Action: 7.9% - *Carved out pharmacy*

2019 Renewal Action: 7.9%

2020 Renewal Action: 5.9%

2021 Renewal Action: 3.9%

2022 Renewal Action: 0% - *Carved out claims administration*

2023 Renewal Action: 2.9%

2024 Renewal Action: 8.7%

IAFF HWT annual

**increase has averaged
4.3% over the last 5
years, while
consistently enhancing
benefits year over year!**



PLAN BENEFITS - SAMPLE TRUST MEDICAL PLANS

	Plan \$300	Plan \$1,000	Plan \$1,500	HSA \$1,500	HSA \$2,000	HSA \$3,000	HSA \$5,000
Network	National BlueCard	National BlueCard	National BlueCard	National BlueCard	National BlueCard	National BlueCard	National BlueCard
Deductible (Individual / Family)	\$300 / \$600	\$1,000 / \$2,000	\$1,500 / \$3,000	\$1,500 / \$3,000 Aggregate	\$2,000 / \$4,000 Aggregate	\$3,000 / \$6,000 Aggregate	\$5,000 / \$10,000 Aggregate
Coinsurance	20%	20%	20%	20%	20%	0%	0%
Out-of-Pocket Maximums (Individual / Family)	\$2,000 / \$4,000	\$3,000 / \$6,000	\$4,000 / \$8,000	\$4,000 / \$8,000	\$4,000 / \$8,000	\$3,000 / \$6,000	\$5,000 / \$10,000
Office Visit Primary Care Provider (PCP)	\$20 Copay	\$20 Copay	\$20 Copay	Ded/Coins	Ded / Coins	Ded / Coins	Ded / Coins
Office Visit Specialist/Urgent Care/Behavioral Health)	\$20 Copay	\$20 Copay	\$20 Copay	Ded/Coins	Ded / Coins	Ded / Coins	Ded / Coins
MD/IVE Telehealth	Covered in full	Covered in full	Covered in full	Ded then Covered in full	Ded then Covered in full	Ded then Covered in full	Ded then Covered in full
Preventive Care	Covered in full	Covered in full	Covered in full	Covered in full	Covered in full	Covered in full	Covered in full
Emergency Room (Copay waived if admitted)	\$100 Copay; then Ded/Coins	\$100 Copay; then Ded/Coins	\$100 Copay; then Ded/Coins	Ded/Coins	Ded / Coins	Ded / Coins	Ded / Coins
Rx Copay - 30 day supply (Generic/Preferred Brand/Non-Preferred Brand)	\$5 / \$25 / \$50	\$5 / \$25 / \$50	\$5 / \$25 / \$50	Ded/Coins	Ded/Coins	Ded then \$5 / \$25 / \$50 Copay	Ded / Coins
Mail Order Rx Copay - 90 day supply (Generic/Preferred Brand/Non-Preferred Brand)	\$10 / \$50 / \$100	\$10 / \$50 / \$100	\$10 / \$50 / \$100	Ded/Coins	Ded/Coins	Ded then \$10 / \$50 / \$100 Copay	Ded / Coins
Vision Benefits - VSP	Included	Included	Included	Included	Included	Included	Included

- Standard plan menu is offered nationwide; pricing varies by geographic area
- Custom plan available by region and for groups 300+ lives



PROVIDER NETWORK + CLAIMS ADMINISTRATION ...THE BEST OF BOTH WORLDS

National Blue Card PPO Network

- Your provider network is the National Blue Cross Blue Shield Plan wherever you are!

Sav-Rx Prescription Services

- Member-centric pharmacy benefits from an all-Union PBM
- Available to assist IAFF HWT members 24/7/365!

MDLIVE Virtual Care

- All IAFF HWT plans include covered in full virtual care benefits, including behavioral health visits

Vision Service Plan (VSP)

- Vision coverage is included in all IAFF HWT plans
- One (1) Exam PCV + Two (2) Pair of Glasses/Contacts Every Other Year
- \$500 toward LASIK / PRK

MagnaCare

- All of your Medical/Rx/Vision benefits are at your fingertips with MagnaCare's state-of-the-art technology platform MyCreateHealth



ALL-INCLUSIVE BENEFITS

\$20,000 Life/AD&D Benefit

- All Active employees are automatically enrolled in a Life/AD&D plan + Line of Duty Death Rider

Transcarent Benefits

All IAFF HWT plans include:

- **The Surgery Care Program** – access to best-in-class Centers of Excellence all over the country for 100+ different surgeries
 - **Virtual Physical Therapy** – access to unlimited sensor-based physical therapy benefits
 - **The Everyday Care Program** – access to 24/7 Health Coaching, expert second opinions and more!
 - **The Oncology Care Program** – a new end-to-end experience for members who experience a cancer diagnosis
- All Active employees are automatically enrolled in a Critical Illness plan
 - Option to buy-up additional Voluntary Benefits on an annual basis

\$5,000 Critical Illness Benefit

Orthopedics Stem Cell/PRP

- All IAFF HWT plans include access to non-surgical orthopedic treatment options at select provider locations across the United States

Member Assistance Program

- All Active employees are automatically enrolled in Member Assistance Program, including up to five (5) face-to-face visits per family member



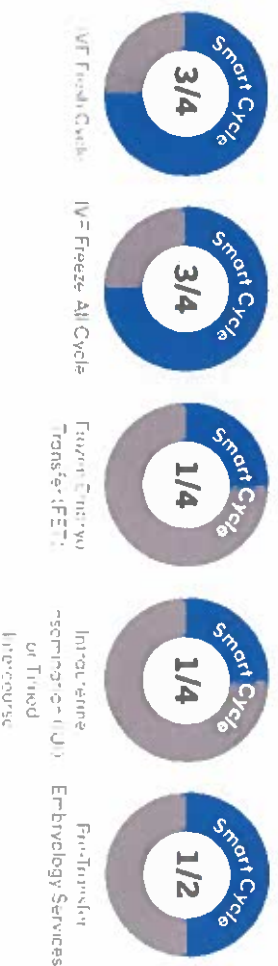
PROGYNY FERTILITY & FAMILY BUILDING

IAFF HWT partners with Progyny to bring Trust Members a comprehensive and inclusive fertility and family building benefit.

Progyny Benefits Include:

- Comprehensive treatment and medication coverage
- Access to a premier network of fertility specialists
- Genetic testing and other advanced technology
- Personalized guidance and support from a dedicated Patient Care Advocate (PCA)

Common ways to use a Smart Cycle:



FIRE FIGHTER PHYSICALS

The IAFF HWT partners with Life Scan Wellness Centers to bring Trust members on-site NFPA 1582/1583 Physical Exams and Wellness Fitness Evaluations

- “Opt-In” via Special Agreement
- Trust pays full cost of base exam for each eligible Fire Fighter
- Life Scan comes onsite and requires use of three rooms and a treadmill
- Additional services are available for direct employer pay (ex: heavy metal screening, chest x-ray, etc.)
- New groups are eligible after 12 months of participation in the Trust



RETIREE BENEFITS

Access to quality Retiree benefits was one of the primary motivations in starting this plan.

- Non-Medicare Retirees must be attached to a Participating Local
 - Ongoing access for Surviving Spouse
 - Same plan design(s) as Actives + additional options
- Medicare Plans are available to any IAFF retired fire fighter/spouse regardless of Active group participation
 - Must be enrolled in Medicare Part A and Part B
- Direct bill from Trust via Employer bill, pension deduction (where available) or ACH



TRUST MEDICARE PLANS

	2024 IAFF HWT MAPD HIGH Option	2024 IAFF HWT MAPD LOW Option	2024 Medicare Supplement Plan G
MEDICAL			
Monthly Premium	\$353.44	\$216.10	\$225.89
Carrier	Humana	Humana	TransAmerica
Type of Plan	Medicare Advantage (MAPD)	Medicare Advantage (MAPD)	Medicare Supplement
Provider Network	Any Provider who accepts Medicare	Any Provider who accepts Medicare	Any Provider who accepts Medicare
Deductible	\$0	\$0	\$240 (Part B Only)
Preventive	Covered in Full	Covered in Full	Covered in Full
PCP Visit	Covered in Full	Covered in Full	Covered in Full
Inpatient Hospital	Covered in Full	Covered in Full	Covered in Full
Skilled Nursing Facility	Covered in Full	Covered in Full	Covered in Full
PRESCRIPTION DRUGS			
Tier 1 Generics	\$0 Copay	\$5 Copay	None
Tier 2 Preferred Brand	\$0 Copay	\$35 Copay	None
Tier 3 Non-Preferred Brand	\$0 Copay	\$75 Copay	None
Tier 4 Specialty	\$0 Copay	33% Cost Share	None
OTHER			
Vision Exam	Covered in Full	Covered in Full	Covered in Full <i>(Davis Vision providers Only)</i>
Vision Hardware	\$150 every 12 months	\$150 every 12 months	Davis Vision discounts only
Hearing Aids	\$500 every 36 months	\$500 every 36 months	EPIC Hearing discounts only
Silver Sneakers	Included	Included	Not Included

All Trust Medicare plans include Retiree Advocacy Services from Retiree First (formerly Labor First)



NEXT STEPS



IAFF Health & Wellness Trust

Request for Proposal (RFP) Questionnaire and Information Request

Return forms to: IAFFTrust@dimarinc.com

Local Name & Number: _____ State: _____

Primary Contact Name: _____

Contact Phone: _____ Contact Email: _____

Desired Effective Date (approx.): _____ Dates of Current CBA: _____

Briefly Describe your timeline for bargaining: _____

Total full-time Fire Department Employees? _____ # of Bargained Employees: _____ # of Non-Bargained _____

Employer Type (City, County, Fire District, etc.)? _____ Are you a Public or Private Entity? _____

What coverage lines are you interested in? (Medical, Dental, Vision, etc.) _____

Current Plan Information

When does your current plan renew? _____

- Engage with the Trust Consultant to get a proposal for your group
- Not everything on the RFP request will be applicable to every Local – ask questions if something doesn't make sense
- Plan Year renewals can be accommodated on request
- Our goal is to work together toward finding the right plan and the right solution for every Local we interact with, even if that solution doesn't end up being the Trust plan



IAFF Health & Wellness Trust

YOUR TRUST TEAMS

The Trust Office

- Dedicated Member Service call center
- Online billing, eligibility and enrollment platform
- COBRA and Retiree plan administration

Trust Consultants

- Hands-on Member education and communication
- Plan governance and compliance services
- Full plan consulting

Trustees

- Engaged and experienced Trustees who ensure the Trust is run efficiently and with Members' best interests always in mind

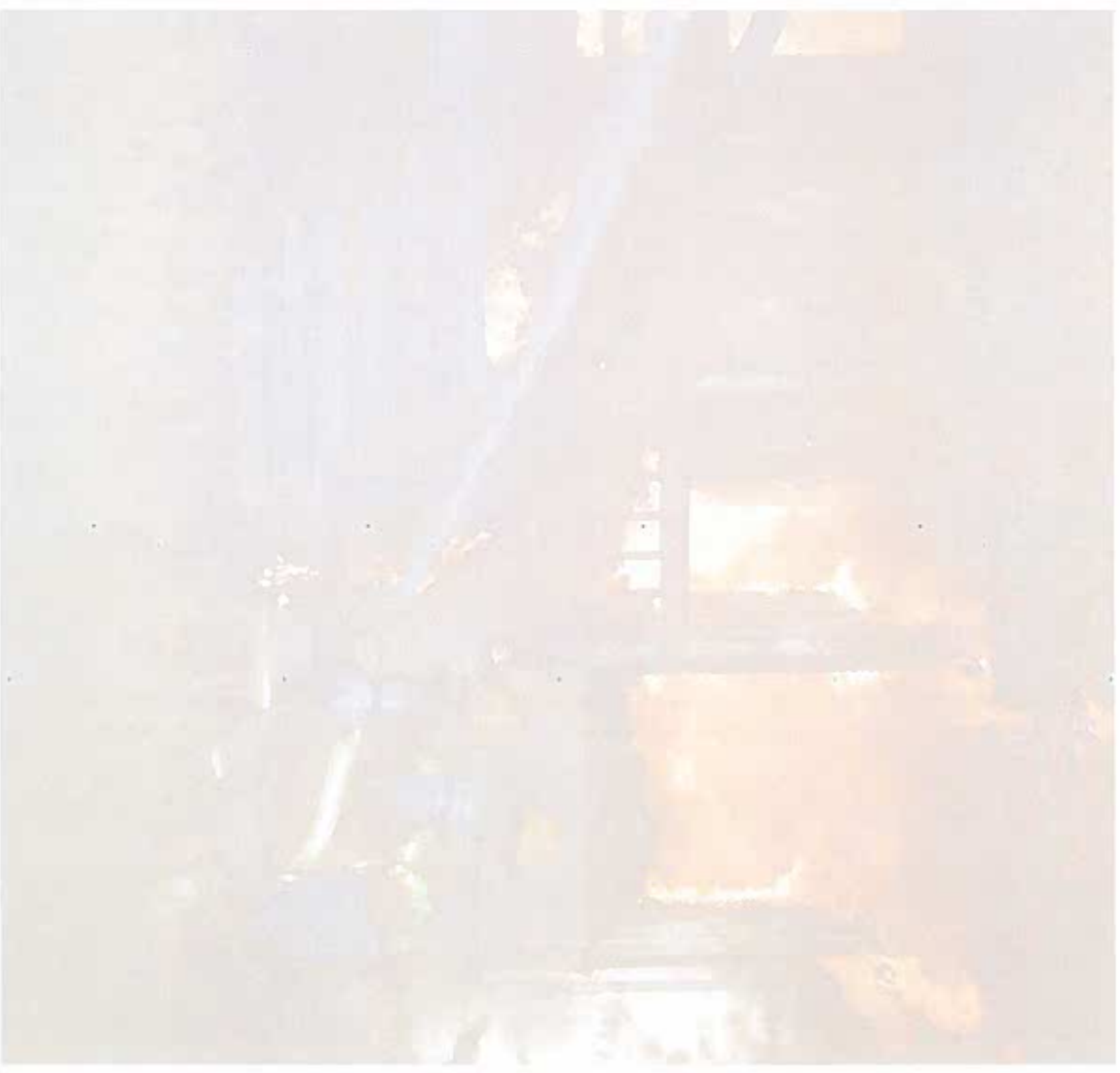




GET MORE INFORMATION

DiMartino Associates
206-623-2430
IAFTrust@dimarin.com

Marcus Morrell
Becky Wallen
Kimberly Beahler
Chris McKeon





North Lyon County Fire Protection District

195 East Main Street

Fernley, Nevada 89408

District Office (775) 575-3310 District Fax (775) 575-3314

www.northlyonfire.org

Brian Bunn, Interim Fire Chief

Directors

Paul Murphy

Mike Toombs

Harry Wheeler

Jay Rodriguez

Debbie Skinner

STAFF REPORT

Board Meeting Date: November 14, 2024

DATE: November 14, 2024
TO: North Lyon County Fire Protection District Board of Directors
FROM: Brian Bunn, Interim Fire Chief
SUBJECT: Recommendation to approve and accept a proposal from Braun Northwest Inc. for a 2026 Ambulance that will be delivered at the beginning of FY 26/27. **FOR POSSIBLE ACTION**

SUMMARY

This item is to approve and accept a proposal from Braun Northwest Inc. for a 2026 Ambulance that will be delivered at the beginning of FY 26/27.

PREVIOUS ACTION

No previous action.

BACKGROUND

Our ambulance fleet is averaging over 130K miles a year due to the distance of receiving hospitals. To maintain a serviceable fleet of ambulances for emergency response, it is imperative to replace our aging fleet.

The NLCPFD was previously awarded a \$300K grant by Lyon County, from the American Rescue Plan Act (ARPA), for the purchase of new ambulance. These monies must be obligated no later than December 31, 2024, and paid in full, with ARPA funds, no later than December 31, 2026

The proposal is for one (1) 2026 North Star 147-1 Ambulance on a 2025 Ford F-450 4X4 Ambulance Prep diesel chassis. Included in the proposal includes round trip travel for a pre-build meeting and final inspection.

The proposal was provided utilizing competitively bid pricing through Houston-Galveston Area Council (HGAC).

PEOPLE FIRST

North Lyon County Fire Protection District is an Equal Opportunity Employer



North Lyon County Fire Protection District

195 East Main Street

Fernley, Nevada 89408

District Office (775) 575-3310 District Fax (775) 575-3314

www.northlyonfire.org

Brian Bunn, Interim Fire Chief

Directors

Paul Murphy

Mike Toombs

Harry Wheeler

Jay Rodriguez

Debbie Skinner

FISCAL IMPACT

The total financial impact to the district is \$51,335. This is above and beyond the \$300K ARPA monies. \$3,835 is for the difference between the proposal and allocated \$300K. The remaining \$47,500 is to install a Stryker Power Load, Stryker Power Pro 2 Cot, and labor for installation. The cost of the Stryker Power products has a high probability of increasing as delivery of the ambulance is a minimum of twenty months out.

RECOMMENDATION

Staff recommends the Board of Fire Directors approve and accept a proposal from Braun Northwest Inc. for a 2026 Ambulance.

POSSIBLE MOTION

Should the Board agree with the staff's recommendation, a possible motion could be:

"I move to approve and accept a proposal from Braun Northwest Inc. for a 2026 Ambulance that will be delivered at the beginning of FY 26/27."

PEOPLE FIRST

North Lyon County Fire Protection District is an Equal Opportunity Employer



150 North Star Drive / PO Box 1204 / Chehalis, WA 98532 / 360.748.0195 / 800.245.6303 / fax 360.748.0256

PROPOSAL

October 22, 2024

North Lyon County Fire Protection District
Attn: Brian Bunn
195 E. Main Street
Fernley, NV 89408
bbunn@northlyonfire.com

RE: One (1) 2026 North Star 147-1 Ambulance

Braun Northwest is pleased to offer the following proposal:

One (1) 2026 North Star 147-1 Ambulance on a 2025 Ford F-450 4x4 Ambulance Prep diesel chassis per enclosed specifications dated 10/22/24 and drawings dated 5/20/24.

Total F.O.B. Chehalis, WA \$303,835.00****

Sales tax not included

F.O.B.: Chehalis, Washington

Delivery: Approximately 530 – 580 days, based upon current manufacturing plan and receipt of chassis.

Terms: Ninety percent (90%) payment due upon receipt of vehicle. Balance due in thirty (30) days.

**Note: Above pricing includes a chassis flooring fee. You will be notified as soon as the chassis arrives at Braun Northwest. If chassis is paid in full within 30-days of arrival a credit will be issued (See Options Page).*

***The above pricing is valid until December 31st, 2024. Any proposal, signed and returned after this date will have a price increase associated with it, to be completed via change order*

****Note: The above pricing includes round-trip travel charges, for three (3) people flying from Reno, NV to Portland, OR for the Pre-Build meeting.*

*****Note: The above pricing includes round-trip travel charges, for (1) person and one-way travel for two (2) people flying from Reno, NV to Portland, OR for the Final Inspection with the agency driving the completed vehicle home.*

(Note: This bid is contingent on use of customer's Government Ford Fleet Identification Number.) Failure to secure a FIN will increase the price by the amount of the GPC chassis discount.

Braun Northwest, Inc. is a Washington dealer (0991-A) with insurance information available upon request.

Respectfully Submitted by:
Braun Northwest, Inc.

We agree to accept the above proposal:
North Lyon County Fire Protection District


Tami McCallum, V.P. of Sales

Signature

Date

Date: 

Printed Name

Title



TM

cc BC/LM

Enclosures: Option page, specifications, drawings.

EMERGENCY VEHICLES

www.braunnw.com

**OPTIONS
FOR
North Lyon County
Fernley, Nevada**

Please indicate if you want the following options by initialing in the space provided and checking the appropriate "yes" or "no" box, then sign where indicated below. After completion, please return this original form to our office along with the original proposal.

Thank you!

1. Pay for chassis in full within 30-days of receipt of chassis at Braun Northwest.
DEDUCT <\$4,000.00>
Do you want this option? ☐ Yes ☐ No _____ initials

2. Utilize a 2025 Ram 4500 4x4 Ambulance Prep diesel chassis.
ADD \$11,716.00
Do you want this option? ☐ Yes ☐ No _____ initials

3. Utilize a single Buell Air horn mounted on OEM bumper with a compressor,
location of compressor to be determined at Pre-Build meeting.
ADD \$2,975.00
Do you want this option? ☐ Yes ☐ No _____ initials

(NOTE: THIS PRICING DOES NOT INCLUDE SALES TAX.)

APPROVED BY: *(Please initial above choice (s) & sign below)*

(Signature)

(Date)

(Printed Name)

(Title)

BRAUN NORTHWEST, INC.
DETAILED SPECIFICATIONS
FOR
NORTH LYON COUNTY
FERNLEY, NEVADA

1 CHASSIS

1.01 OEM CHASSIS

- 2025 Ford F-450 XLT, Regular Cab 4 x 4, meeting all the specifications of Section 1.01 (**Note: Chassis is subject to model year changes**)
 - Ambulance Prep. Package with EPA Special Emergency Vehicle Emissions (**47L**)
 - 3-year/36,000 mile "Bumper to Bumper" warranty
 - Dual rear wheels
 - Provided by Braun Northwest

1.01.01 SPECIFIC RATINGS

- Drive – 4 x 4
- G.V.W.R. – 16,500 lb
- Front Axle – 7,000 lb
- Rear Axle – 12,880 lb
- Wheelbase – 169"
- Cab to Axle – 84"
- Front Spring Capacity – 7,000 lb
- Rear Spring Capacity – 12,880 lb
- Rear Differential – 4.10 ratio, limited slip wide track rear axle

1.01.02 POWER TRAIN

- Engine
 - 6.7L Power Stroke V8 turbo diesel B20
 - Diesel Emission Fluid (DEF) system with operator-commanded regeneration
 - Exhaust brake
 - External oil cooler
 - Factory diesel package
 - Engine block heater
 - Heavy duty dry type air cleaner with flow restriction indicator
- Engine Cooling System
 - Heavy duty, closed-air, free-liquid state type
 - Coolant recovery system
 - 50/50 solution Permanent type antifreeze to –34 degrees F
- Transmission
 - TorqShift 10-speed automatic transmission with selectable drive modes (Normal, Eco, Slippery Roads, Tow/Haul)
 - External oil cooler in chassis grille area
 - Electronic Shift on the Fly with auto-locking wheel hubs

- Exhaust System
 - System complies with Federal Motor Carrier Safety Regulations, Part 393.83
 - Suspended using three hangers, excluding manifold attachment
 - Discharge at right rear side of module
 - Tailpipe shall not terminate within twelve inches of the vertical axis of the fuel tank filler opening.

1.01.03 STEERING

- Power assisted
- Manual Tilt and telescoping steering wheel/column

1.01.04 SHOCK ABSORBERS/STABILIZER BARS

- Heavy-duty shock absorbers front and rear
- OEM front and rear stabilizer bars

1.01.05 BRAKES

- Heavy duty power-assisted four wheel ABS; front and rear disc
- Trailer Brake Controller

1.01.06 TIRES AND WHEELS

- Seven OEM LT 225-70R-19.5G all-purpose steel belted radials
- Seven OEM 19.5" Argent-painted steel wheels
- Spare tire and wheel shipped loose
- OEM jack and tire changing tools

1.01.07 ELECTRICAL

- Alternators – OEM Dual rated at 410 Amps total
- Batteries – OEM Dual 750CCA 68AH/Group 65 AGM
- Stationary Elevated Idle Control

1.01.08 INSTRUMENT PANEL AND CONTROLS

- Gauges
 - Speedometer
 - Tachometer
 - Engine Coolant Temperature
 - Transmission Fluid Temperature
 - Turbocharger Boost
 - Fuel Level
 - Indicator lights
 - Odometer/Trip Odometer
- Cruise Control, with steering mounted controls
- Audio – OEM AM/FM with MP3
- SYNC 4 - 8" touchscreen in center stack
- 4.2" LCD Productivity Screen in IP Cluster with compass display
- Ford Pass® Connect 5G Wi-Fi Modem
- Ford Co-Pilot 360
 - Audible Lane Departure Alert
 - Pre-collision Assist with Automatic Emergency Braking
- Rearview Camera and Prep Kit (872)

1.01.09

CAB EXTERIOR

- Trim Level – XLT
- Bumper – Chrome
- Grille – Bright chrome
- Tow Hooks – Two Front
- Mud Flaps – Two Front
- Horn – OEM dual electric
- Windows – Solar Tinted
- Windshield wipers – Two-speed electric, washer and intermittent speed control
- Mirrors
 - Two black manually telescoping trailer tow
 - Power, heated glass, upper portion
 - Turn indicators and clearance lights on outside edge
 - Lower portion convex
- Lights
 - Headlamps – Auto High-Beam, Quad-beam halogen
 - Roof clearance lights
 - Daytime running lamps
 - Halogen fog lamps
- Fuel – OEM 40 gallon tank

1.01.10

CAB INTERIOR

- Trim Level – XLT
- Seats – OEM
 - Cloth 40/20/40
 - Combination lap and shoulder harness
 - Side door armrest
- Flooring – Black vinyl
- Climate Control – OEM
 - Heavy duty, fresh air, high capacity heater/defroster
 - Dehumidifying air conditioning system
- Airbags
 - Driver and passenger frontal and side airbag/curtain
 - Passenger side airbag deactivation switch
- Other
 - Dome light, with dual map lights
 - Auxiliary Power Point
 - Interior hood release
 - Power door lock & windows
 - Remote keyless entry w/Anti-Theft

1.01.11

COLORS

- Exterior – Race Red (PQ)
- Interior – Medium Dark Slate

1.02 CHASSIS MODIFICATIONS

The following modifications will be made to the chassis by Braun Northwest.

1.02.04 EXHAUST HEAT SHIELDS

Shall be formed from 20 ga. galvanized sheet metal with stamped reinforcements and formed edges. Access openings shall be provided for shock absorber, mounting bolts, etc. Heat shields shall be bolted to chassis frame and extend from back of cab to the frame cross member just behind the rear axle.

1.02.05X RUNNING BOARDS

Running boards made of 0.125" bright aluminum diamond plate for a Ford F-450 Regular cab shall be securely mounted on both sides of the chassis with OEM fasteners.

Running boards shall be sand-blasted and finished with textured black polyurea thermoplastic elastomer (Section 3.04.01 related).

1.02.08X RECOVERY EYES

Two rear recovery eyes, rated at 10,000 lb per pair, shall be installed in 6.75"W x 6.75"H x 4.375"D recessed pockets. Eyes shall be 1.8125"D, bolted to frame. These eyes shall not be used for towing or lifting of emergency vehicle (not shown in drawings).

Recessed pockets shall be sand-blasted and finished with textured black polyurea thermoplastic elastomer (Section 3.04.01 related).

1.02.09 MUD FLAPS

Mud flaps with the "NORTH STAR" logo shall be installed behind rear wheels.

1.02.10A TIRES AND WHEELS

The seven OEM tires/wheels including spare shall be removed from the vehicle and tires dismounted. Both sides of each wheel shall be sand blasted and gloss black powder coated before tires are remounted, balanced, and re-installed on the vehicle (Section 3.04.01 related).

1.02.14A SUSPENSION

A LiquidSpring rear suspension system shall be installed, with a kneeling feature to activate when the rear streetside patient compartment entrance door opens within 60 minutes of the chassis ignition being turned off.

An override switch labeled "DUMP OVERRIDE" shall be installed on the curbside rear wall, accessible from rear curbside door.

The LiquidSpring control panel shall be installed on the chassis dash to the left of the steering wheel.

1.02.17 CHASSIS FRAME EXTENSIONS

A 10"H frame extension shall be welded to each OEM frame rail to provide rear lateral and bumper support and to provide a step height of 13.5" from the bumper to the module floor.

1.02.31A STATION EXHAUST

A 3.5" collar shall be installed on the OEM exhaust to allow connection to customer's Plymovent Pneumatic Grabber station exhaust system.

1.02.36B AUXILIARY COMPRESSOR

A TM-21 auxiliary air conditioning compressor kit shall be added to the OEM engine (Section 5.17 related).

1.02.60**CAB CONDUIT**

A 5.5" cab conduit shall be installed between the cab and module behind the driver's seat. The driver's console harness shall be routed through the conduit.

1.03 MODULE-TO-CHASSIS MOUNTING SYSTEM

1.03.01 MODULE MOUNTING SYSTEM

The module shall be bolted to the chassis frame in no fewer than twelve locations. Each mounting location shall include a hard rubber isolation pad between the chassis frame and the module lateral. The rearmost lateral(s) shall be connected to the frame extensions with 5/8" grade 8 bolts. All remaining laterals shall be connected with vertical 3/4" grade B7 eye bolts fastened to the frame rails with horizontal 3/4" grade 8 hex bolts. All bolts shall be secured with locking nuts.

1.03.02A CAB-TO-MODULE ATTACHMENT

The module shall be connected to the cab with a flexible watertight boot to allow cab-body flex as designed by the chassis manufacturer.

The chassis rear window shall be replaced by an aluminum insert covered with black-painted polyurea thermoplastic elastomer, with a 16"W x 12.5"H opening on the cab side with a sliding clear 0.25" polycarbonate window and an extruded aluminum door pull, a 16"W x 15"H opening on the module side, and a stainless steel cover to protect the bottom of the pass-thru (Sections 2.13 and 3.04.01 related).

2**MODULAR CONSTRUCTION**

All material utilized shall be of the correct type, alloy, and thickness to withstand the intended usage and provide protection against cracking, corrosion, or metal fatigue. All materials utilized shall be of open stock origin, commonly available through local sources, for rapid and economical repair or modification of the body. Any use of proprietary parts or materials in the construction of the body is unacceptable, due to potential delays or difficulties in future repairs or service. NO EXCEPTIONS TO BE TAKEN IN THIS AREA. This specification has been designed and written to fill specific needs of this agency. Where brand name, make, or model of equipment has been specified, no exceptions shall be allowed. Where compartment and cabinet sizes have been specified, bidder must bid substantially (plus or minus 1") the size specified.

The module shall have a transferable lifetime structural warranty.

2.01**MATERIAL**

EXTRUSIONS	SIZE	ALLOY
Structural Tubing	1" x 2" x 0.125" sq.	6063-T52
Structural Tubing	2" x 2" x 0.125" sq.	6063-T52
Cross Members	3" x 3" x 0.375"	6061-T6
Cross Members	1.5" x 0.25"	6061-T6
FORMED SHEETING	SIZE	ALLOY
Skin/Roof/Compartments/Subfloors/Doors	0.125"	5052-H32
Interior Cabinets	0.090"	5052-H32
Diamond Plate	0.125"/0.08"	3003-H22
Stainless Steel	16 ga., 20 ga.	304 # 4B

2.02**MODULE DIMENSIONS**

Overall Vehicle Dimensions (Specifications are listed as minimums.)

Length	23 '	1.25 "	277.25 "
Width (excluding mirrors)	8 '	0 "	96.00 "
Height (Approximate)	9 '	5.50 "	113.50 "

Exterior Module Dimensions (Specifications are listed as minimums.)

Length	12 '	3 "	147.00 "
Width	7 '	10 "	94.00 "
Height	7 '	4.38 "	88.38 "

Interior Dimensions (Specifications are listed as minimums.)

Length	Forward Wall to Rear Wall	139.00 "
Width	Left Wall to Right Wall	89.00 "
Floor Width	Left Cabinets to Squad Bench	50.25 "
Height	Floor to Ceiling	72.00 "

Load Height (Approximate)	37.25 "
With suspension dumped	33.25 "

2.03**STRUCTURAL FRAMING**

Side wall and rear wall construction shall consist of 2" x 2" x 0.125" aluminum square tubing extensions welded together with a maximum of 14" centers. 1" x 2" x 0.125" aluminum tubing may be utilized in addition to 2" x 2" tubing to accommodate custom compartment sizes. The bottom of the wall structure shall be sealed with a welded 2" x 2" tube, a 2" x 2" angle, or a 0.125" plate depending upon location. The wall structure shall be capped with a 2" x 4" x 0.125" header upon which a 2" x 2" x 0.125" roof structure is welded. This process provides a unitized roll cage structure for greater occupant safety. The front wall structure shall be constructed of formed aluminum channels to allow ample space for wiring raceways, heater hoses, and A/C hoses.

2.04**FOUNDATION SYSTEM**

The foundation system shall consist of a 0.125" aluminum sheet subfloor with foundation members securely welded under the subfloor. Transverse members (laterals) shall consist of 3" x 3" x 0.375" structural angles. 0.25" x 1.5" aluminum stringers shall span longitudinally between the laterals.

2.05**MODULE SEAMS**

All body and compartment seams at or below floor level shall be full-seam-welded. The entire perimeter of the subfloor shall be completely sealed with a caulking material, creating a watertight seam.

2.06**EXTERIOR SKIN**

A Norton NORBOND closed-cell, polyurethane foam tape with high-performance acrylic adhesive shall be utilized full length on all front and rear wall and roof frame members. A polyurethane adhesive sealant shall be applied to the edges of framing members that are bonded with NORBOND tape. An advanced two-part methacrylate structural adhesive shall be used to bond all side wall tubes to the exterior skin and door frames.

The module shall be constructed utilizing full-size sheet construction to minimize body seams. There shall be no corner or mid-body seams.

2.07**MODULE ROOF**

In order to improve module strength and minimize exposed seams, the roof shall be seamed transversely, shall be crowned, shall have a 1.5" radius along the edges, and shall be welded to 2" x 4" wall header tubes 4.75" below the roof line. The roof shall be supported by positive contact between sidewall framing and roof framing. All seams on the roof surface shall be continuously welded and body-worked on the outside. In order to avoid the possibility of paint and/or weld cracking, no extrusions shall be used in the exterior construction of the roof or corners of the module.

A contoured, 3/8" aluminum plate, painted to match the module, shall be welded to the roof structure and project through the center of the roof to serve as anchorage for personal fall arrest equipment. The anchorage is designed and rated for a single person only.

2.08

MODULE EXTERIOR COMPARTMENTS

All compartments shall be constructed from formed 0.125" aluminum, securely welded to the subfloor and structural framing. A baffled drain hole shall be provided in all exterior compartment bottoms that extend below the floor line. All exterior adjustable shelves shall be mounted on aluminum track securely welded to compartment interiors. Each shelf shall support at least 300 lb of equipment.

COMPARTMENT #1

Interior Dimensions – 52"W x 35"H x 19"D

Doorway Dimensions – 52"W x 35"H

Location – Streetside, forward

Shelving – One 17.5"W adjustable bin-type

Doors – Double

Light – One LED strip light (Section 6.26 related)

Additional Instructions –

- Two 2"H black seatbelt-type straps with footman loops shall be installed, one each at the top and bottom of each compartment door frame to protect the doors from excessive overtravel (Section 2.09.04 related).
- A 120 VAC Power Box shall be installed in the forward wall, recessed so as not to protrude into the compartment (Section 6.21 related).
- The side wall of the bin shelf shall be notched to allow better access to the 120 VAC Power Box.
- Four strips of heavy-duty aluminum track shall be installed on the back wall.
- Two strips heavy-duty aluminum track shall be installed on each side wall.
- A vent with MERV 8 polyester filter media and a hex-punched stainless steel cover shall be installed on the forward wall.

COMPARTMENT #2

Interior Dimensions – 25"W x 74"H (forward), 77"H (aft) x 19"D

Doorway Dimensions – 25"W x 70"H

Location – Streetside, aft

Shelving – Two adjustable, and one 10.125"W adjustable bin-type

Doors – Single

Light – One LED strip light (Section 6.26 related)

Additional Instructions –

- Two 2"H black seatbelt-type straps with footman loops shall be installed, one each at the top and bottom of the compartment door frame to protect the door from excessive overtravel (Section 2.09.04 related).
- A recessed pocket shall be provided in the compartment door skin for a boot-shaped stair chair bracket (Section 2.09.07 related).
- A black powder coated angled corner bracket shall be installed on aluminum track, lower aft, for a *customer-supplied-and-installed* SCBA cylinder holder (Section 4.10 related).
- A boot-shaped bracket shall be installed by BNW in the forward section of this compartment for storage of a *customer-supplied-and-installed* stair chair (Section 4.27 related).
- A PAC Bracket Handlelok 1004 tool mount shall be mounted in the door skin pocket for a *customer-supplied-and-installed* 32"H Halligan tool (exact location to be determined at preconstruction meeting).
- Three horizontal strips of heavy-duty aluminum track shall be installed on back wall, forward.
- Two vertical strips of heavy-duty aluminum track shall be installed on the back wall, aft.
- Painted aluminum wiring access panels with precision punched ventilation shall be installed on the aft wall.
- A vent with MERV 8 polyester filter media and a hex-punched stainless steel cover shall be installed on the aft wall.

COMPARTMENT #3

Interior Dimensions – 15.5"W x 77"H x 19"D

Doorway Dimensions – 15.5"W x 70"H

Location – Curbside, aft

Shelving – One 8"W bin-type

Door – Single

Light – One LED strip light (Section 6.26 related)

Additional Instructions –

- Two 2"H black seatbelt-type straps with footman loops shall be installed, one each at the top and bottom of the compartment door frame to protect the door from excessive overtravel (Section 2.09.04 related).
- A welded bracket, painted to match the compartment, and three ratcheting straps with UHMW stiffeners shall be installed on the aft wall for a *customer-supplied-and-installed* H or M-size cylinder (Section 4.10 related).
- Two vertical strips of heavy-duty aluminum track shall be installed on the back wall for installation of one bin-type shelf above the cylinder.
- Two backboard restraining straps with footman loops shall be installed on the aft wall.
- A formed stainless steel gasket cover shall be installed on the lower doorframe edge so that backboards do not cut gasket material.
- Painted aluminum wiring access panels with precision punched ventilation shall be installed on the aft wall.
- A vent with MERV 8 polyester filter media and a hex-punched stainless steel cover shall be installed on the aft wall.

COMPARTMENT #4

Interior Dimensions – 20.5"W x 25"H x 19"D

Doorway Dimensions – 20.5"W x 25"H

Location – Curbside, aft of wheel well

Shelving – One full width adjustable

Door – Single

Light – One LED strip light (Section 6.26 related)

Additional Instructions –

- Two 2"H black seatbelt-type straps with footman loops shall be installed, one each at the top and bottom of the compartment door frame to protect the door from excessive overtravel (Section 2.09.04 related).

COMPARTMENT #5 – Inside/Outside Access

Interior Dimensions – 25.75"W x 48.25"H x 19"D

Doorway Dimensions – 25.75"W x 48.25"H

Location – Curbside, forward

Shelving – See Interior Cabinet #18

Door – Single

Light – One LED strip light (Section 6.26 related)

Additional Instructions –

- Two 2"H black seatbelt-type straps with footman loops shall be installed, one each at the top and bottom of the compartment door frame to protect the door from excessive overtravel (Section 2.09.04 related).
- Compartment shall provide inside/outside access to Cabinet #18 with a full width stainless steel threshold on the floor level shelf.
- There shall be general storage below the floor.

2.09 MODULE DOORS

The doors shall be box-pan-formed with a total thickness of 2".

2.09.01A DOOR FRAME AND SEAL

Each door frame shall have a flange for the installation of an air cell hollow core 360-degree compression door seal. This seal creates watertight, dust-free compartment integrity. Door seal shall be knock-on type. Door frames shall be bonded to the adjacent tubes such that no exterior flange is required. A secondary wiper style seal shall be installed across the top and between the rear passage doors.

2.09.02 DOOR HINGES

Compartment and passage doors shall have full-length, piano-type, 2.5"W stainless steel hinges, positioned with 0.25" rivets at each end. The hinges shall be attached with #12 x 0.75" stainless steel truss head screws spaced 4" apart, sealed with Sikaflex. All curbside and streetside side-hinged single doors shall be hinged on the forward sides, rear passage doors shall be hinged on the outboard sides.

2.09.03X DOOR LATCHES

Exterior door handles shall be semi-flush, **black** Eberhard E Grabber #21100. Passage doors shall have release handles on the inside of each door. All exterior doors shall have rotary latches and striker posts that meet FMVSS 206 requirements. Striker posts shall be adjustable and be secured with a nut from behind the door frame. The striker washer shall not be removed. Door shall have double rotary latches activated by stainless steel rods. Once final adjustments have been made, threads shall have Loctite or equivalent applied. All double-door compartments shall have an exterior E Grabber handle and rotary latches on each door. Doors shall latch to doorframe-mounted striker posts only and not to one another. Curbside passage and rear curbside doors shall have interior handles with dual-point, rod-actuated, rotary latch systems that are lockable inside and out. All locks shall be keyed J236.

Rear passage doors shall both have emergency release levers, one at the top and bottom of each door and accessible from the inside of the module.

2.09.04X COMPARTMENT DOOR CONTROLS

A spring-dampened gas shock capable of holding the door open at approximately a 90-degree angle on any road surface shall be installed at the top of each compartment door. Two 2"H black seatbelt-type straps with footman loops shall be installed, one each at the top and bottom of each Compartment #1-5 door frame to protect the doors from excessive overtravel.

2.09.05X CURBSIDE DOOR CONTROL

A spring-dampened gas shock capable of holding the door open at approximately a 90-degree angle on any road surface shall be installed at the top of the curbside passage door. Two 2"H black seatbelt-type straps with footman loops shall be installed, one each at the top and bottom of the door frame to protect the door from excessive overtravel (Section 2.09.08 related).

2.09.06 REAR DOOR CONTROLS

Rear door controls shall be one grabber-type hold-open device with replaceable rubber catch, per door.

2.09.07X**COMPARTMENT DOOR SKINS**

Each compartment door skin shall be made of 0.080" bright aluminum diamond plate, shall be removable, and have a latch service opening with a 2.25" x 4.5" black rubber plug for lubrication and service. Door skins shall be secured with #8 pan head screws and Sikaflex. Red/white 1.5" conspicuity tape shall be installed on the outboard vertical edge of each door.

A recessed pocket shall be provided in the compartment door skin for a boot-shaped stair chair bracket (Section 2.09.07 related).

2.09.08**ENTRANCE DOOR SKINS**

Each entrance door skin shall be made of 0.080" bright aluminum diamond plate and be removable to service door hardware. A removable stainless steel bezel shall be installed at mid-height on the door skin to provide access to the latch hardware and electric lock motors (Section 6.40 related). Red/white 1.5" conspicuity tape shall be installed on the top, bottom, and vertical edges of the side passage door and curbside rear door. The streetside rear door shall have conspicuity tape on the top and bottom edges.

A stainless steel bracket for a 7-Qt. waste container shall be attached to the lower portion of the curbside rear door skin (Section 5.26 related).

2.09.09X**ENTRANCE DOORWAYS**

One curbside and two rear module entrance doors shall be provided. The curbside doorway dimensions shall be 28"W x 73.75"H. The rear doorway dimensions shall be 49.75"W x 66"H.

2.09.10**THRESHOLDS**

All compartment and module access door frames shall have full-width-formed stainless-steel threshold plates to protect the lower edge of frame.

2.10**MODULE INTERIOR CABINETS**

Shall be formed of 0.090" aluminum and shall be securely welded or mounted to the structural framing. All interior adjustable shelves shall be mounted on 1" wide aluminum track.

CABINET #1

Dimensions – 19.25"W x 13.75"H x 14.75"D

Location – Streetside, upper forward

Shelving – One adjustable

Door – Top-hinged clear 0.25" polycarbonate door with a Southco M1 latch, dual gas shock hold-opens and an extruded aluminum door pull

Lighting – One LED under-cabinet strip light (Section 6.14 related)

Additional Instructions – None

CABINET #2

Dimensions – 19.25"W x 13.75"H x 14.75"D

Location – Streetside, upper forward

Shelving – None

Door – Top-hinged clear 0.25" polycarbonate door with a Southco M1 latch, dual gas shock hold-opens and an extruded aluminum door pull

Lighting – One LED under-cabinet strip light (Section 6.14 related)

Additional Instructions – None

CABINET #3

Dimensions – 19.25"W x 13.75"H x 14.75"D

Location – Streetside, upper forward

Shelving – One adjustable

Door – Top-hinged clear 0.25" polycarbonate door with a Southco M1 latch, dual gas shock hold-opens and an extruded aluminum door pull

Lighting – One LED under-cabinet strip light (Section 6.14 related)

Additional Instructions – None

CABINET #4

Dimensions – 19.25"W x 13.75"H x 14.75"D

Location – Streetside, upper

Shelving – None

Door(s) – Top-hinged clear 0.25" polycarbonate door with a Southco M1 latch, dual gas shock hold-opens and an extruded aluminum door pull

Lighting – One LED under-cabinet strip light (Section 6.14 related)

Additional Instructions – None

CABINET #5

Dimensions – 21"W x 13.75"H x 14.75"D

Location – Streetside, upper aft

Shelving – One adjustable

Door – Top-hinged clear 0.25" polycarbonate door with a Southco M1 latch, dual gas shock hold-opens and an extruded aluminum door pull

Lighting – None

Additional Instructions – None

CABINET #6

Dimensions – 21"W x 15"H x 14.75"D

Location – Streetside, aft

Shelving – One adjustable

Door – Top-hinged clear 0.25" polycarbonate door with a Southco M1 latch, dual gas shock hold-opens and an extruded aluminum door pull

Lighting – One LED under-cabinet strip light (Section 6.14 related)

Additional Instructions – None

#7 – Streetside Work Area

Dimensions – 22"W x 15.75"H x 19"D

Location – Streetside, aft of CPR Seat

Additional Instructions –

- A 120 VAC GFCI duplex receptacle shall be installed on the back wall, aft (Section 6.21 related).
- A full depth one-piece 16 gauge, 304 stainless steel countertop with a 0.5" aluminum retaining lip and aluminum cove trim along the wall shall be installed.

#8 – Action Area

Dimensions – 54"W x 31.75"H x 19"D

Location – Streetside

Additional Instructions –

- The following items shall be installed on the Action Area wall:
 - One oxygen outlet (Section 5.11 related)
 - One Rico regulator and suction collector (Section 5.13 related)
 - One digital thermostat (Section 5.17 related)
 - One six-switch attendant control panel (Section 6.13 related)
 - One 120 VAC GFCI duplex receptacle (Section 6.21 related)
 - One dual USB charging port with cover (Section 6.25 related)
 - One inverter status panel (Section 6.31 related)
- A full depth one-piece 16 gauge, 304 stainless steel countertop with a 0.5" aluminum retaining lip and aluminum cove trim along the wall shall be installed.
- A sharps and waste space sized for a Becton-Dickinson, 8.2-Qt., sharps container and a 7-Qt. waste shall be installed at the aft end of countertop, with a hinged clear 0.177" polycarbonate cover with a finger hole (Section 5.26 related).
- A *customer-supplied* Motorola 8500 remote head, auxiliary speaker, and mic shall be mounted on the underside of Cabinet #2 (not shown in drawings, Sections 6.18 and 8.02 related).

CABINET #9

Dimensions – 8"W x 24.875"H x 8"D

Location – Front, behind attendant seat

Shelving – None

Door – Single forward-hinged painted aluminum with two Southco C2 latches, facing pass-thru

Additional Instructions –

- Two vertical strips of aluminum track shall be installed on the back wall for hanging ballistic vests.
- Two brackets shall be provided: 1" square tube x 18.5"L welded perpendicular to plate. Provide 2" x 2" gusset between plate and tube at bottom of tube for stiffness. Provide 1"W x 1.5"H cap to end of tube with 0.5" lip up to keep vests from sliding off the end of the tube.



CABINET #10 – CPR Seat with Storage

Dimensions – Bench: 25.5"W x 18.75"H x 19"D

Storage: 25.5"W x 7.625"H x 19"D

Location – Streetside

Door – Aluminum bench lid, with high-density foam padding covered with seamless vinyl shall provide access to the storage area. Lid shall have a 1.5" overhang, automatic hold-open device, and stainless steel paddle latch. The pad shall be removable.

Additional Instructions –

- The CPR seat back and head pads shall have high density foam padding covered with seamless vinyl (Sections 3.08 and 5.03 related).
- A four-point single-buckle energy absorbing seat belt with below-the-bench retractors shall be installed on the seat, set up for use with sit-up occupants (Section 5.14 related).

CABINET #11– Custom Drawers

Location – Streetside lower, aft

Additional Instructions –

- There shall be two 17.375"W x 6"H x 13"D metal drawers. Each drawer shall operate on slides rated at 300 lb per set and have a gas shock hold open/closed device to ensure drawer does not accidentally open or close during operation of the vehicle. Drawers shall be of formed 0.125" aluminum construction, painted to match the interior.
- Drawers shall have machine-stamped divider supports along the sides and back of the of the drawer with four removable ABS dividers per drawer.

CABINET #12

Dimensions – 31.5"W x 10"H x 9"D

Location – Curbside upper, aft

Shelving – None

Door – Top-hinged clear 0.25" polycarbonate door with a Southco M1 latch, dual gas shock hold-open and an extruded aluminum door pull

Lighting – One LED under-cabinet strip light (Section 6.14 related)

Additional Instructions – None

CABINET #13

Dimensions – 31.5"W x 10"H x 9"D

Location – Curbside, upper

Shelving – None

Door – Top-hinged clear 0.25" polycarbonate door with a Southco M1 latch, dual gas shock hold-open and an extruded aluminum door pull

Lighting – One LED under-cabinet strip light (Section 6.14 related)

Additional Instructions –

- Two strips of heavy-duty aluminum track shall be installed on the ceiling of cabinet.
- Three full-height vertical painted aluminum adjustable dividers shall be installed on the aluminum track, evenly spaced.

CABINET #14 – Glove Storage

Dimensions – 25.25"W x 6.75"H x 4"D

Location – Curbside, above passage door

Shelving – None

Door – Bottom-hinged, painted aluminum with a black quarter-turn latch and three cut-outs

Lighting – None

Additional Instructions –

- This cabinet shall provide storage for three glove boxes in a horizontal orientation (Section 5.32 related).

CABINET #15– Cylinder Storage

Dimensions – 13"W x 25"H x 5.25"D

Location – Right front stack, aisle-facing, lower

Door – Tip-out bottom-hinged painted aluminum door with a Southco C2 latch and nylon travel stop strap

Additional Instructions –

- Cabinet shall provide storage for two *customer-supplied-and-installed* "Jumbo D" oxygen cylinders (Section 5.35 related).
- A stainless steel spring with dual flaps shall be installed to prevent cylinder rattling.

CABINET #16 – Squad Bench with Storage**Dimensions** – Bench: 65"W x 18.75"H x 19"D

Storage: 42.25"W x 7.625"H x 19"D

Location – Curbside**Door** – Aluminum bench lid, with high-density foam padding covered with seamless vinyl shall provide access to the storage area. It shall have a 1.5" overhang, automatic hold-open device, and a stainless steel paddle latch. The pad shall be removable.**Additional Instructions** –

- The bench back and head pads shall have high density foam padding covered with seamless vinyl (Sections 3.08 and 5.03 related).
- An oxygen outlet and momentary rocker switch to activate the dome timer shall be installed on the wall at the forward end of the bench (Sections 5.11 and 6.16 related).
- Two sets of four-point, single-buckle energy-absorbing seat belts with below-the-bench retractors shall be installed on the bench with three additional lower receivers, set up for use with sit-up occupants or stretcher patients (Section 5.14 related).
- A stainless steel bracket for a Sage #85131 5-Qt. mailbox style sharps container shall be installed below the oxygen window (Section 5.26 related).
- An oxygen window shall be installed on the forward-facing wall at the aft end of bench (Section 5.29 related).

CABINET #17 – HVAC**Dimensions** – 34.75"W x 16.5"H x 27.875"D**Location** – Right front stack, upper**Additional Instructions** –

- Cabinet shall house the AC/heater and suction pump (Sections 5.12 and 5.17 related).

CABINET #18 – Electrical Cabinet**Dimensions** – 30.75"W x 13"H x 10"D**Location** – Front, centered over pass-thru**Shelving** – None**Door(s)** – Top-hinged painted aluminum swing up door with a hold-open device and a quarter turn slotted latch**Lighting** – An automatic cabinet light (Section 6.14 related)**Additional Instructions** –

- An atomic-controlled clock shall be mounted on the face of cabinet door (Section 5.24 related).
- Cabinet shall house the electrical component module (Section 6.01 related).

CABINET #19**Dimensions** – 17.75"W x 18.25"H x "D**Location** – Left front stack**Shelving** – One adjustable**Door(s)** – None**Lighting** – None**Additional Instructions** –

- A 120 VAC GFCI duplex receptacle shall be installed on aft end of the back wall, lower (Section 6.21 related).
- A 120 VAC fluid warmer with a 4" surround shall be installed on the cabinet floor (Section 6.35 related).

CABINET #20 – Knox MedVault

Location – Left front stack, lower

Additional Instructions –

- A *customer-supplied* Wi-Fi enabled Knox MedVault 2.5 medications safe with "rubber-duddy" antenna shall be installed (Sections 5.36 and 8.02 related).

CABINET #21

Dimensions – 27.25"W x 14.5"H x "D

Location – Right front stack,

Shelving – One adjustable shelf with 1" x 1" lip down to exterior, and 2" lip towards interior with 2-1/2" diameter hole in upper corner for cord access

Doors – Sliding clear 0.25" polycarbonate with felt-lined anodized aluminum track, interlocking aluminum trim, and full extruded aluminum door pulls with integral door latch

Additional Instructions –

- A 120 VAC GFCI duplex receptacle shall be installed above the upper shelf, inboard (Section 6.21 related).

CABINET #22 – Custom Drawer

Location – Streetside lower, aft

Additional Instructions –

- There shall be one 23.5"W x 5"H x 19"D metal drawer. The drawer shall operate on slides rated at 300 lb per set and have a gas shock hold open/closed device to ensure drawer does not accidentally open or close during operation of the vehicle. Drawer shall be of formed 0.125" aluminum construction, painted to match the interior.
- Drawer shall have machine-stamped divider supports along the sides and back of the of the drawer with four removable ABS dividers per drawer.
- Drawer shall have a Simplex lock (different than shown in drawings).

CABINET #23 – Inside/Outside Access

Dimensions – 25.75"W x 32.5"H x 27.875"D

Location – Right front stack

Shelving – Two adjustable shelves with 1" x 1" lip down to exterior, and 2" lip towards interior with 2-1/2" diameter hole in upper corner for cord access

Doors – Two clear 0.375" polycarbonate side-hinged doors, each with a 20 ga stainless steel brace, 0.375"D steel rods, slam latch and a paddle latch handle

Additional Instructions –

- Cabinet shall be accessible from the outside via exterior Compartment #5.
- A 120 VAC GFCI duplex receptacle and a 12 VDC receptacle with cover shall be installed on the back wall, below the upper shelf (Sections 6.21 and 6.25 related).

CABINET #24 – Electronics Cabinet

Dimensions – 17.5" W x 25.875"H x 8"D

Location – Front, behind attendant seat

Shelving – None

Door – Aft facing, painted aluminum lift off panel with two SouthCo C2 latches and upper and lower punched areas

Additional Instructions –

- A *customer-supplied* Motorola 8500 transceiver shall be installed (Sections 6.18 and 8.02 related).
- Antenna cables shall terminate in this cabinet (Section 6.19 related).
- A Samlex inverter shall be installed on the back wall, mounted to an aluminum plate (Section 6.31 related).
- Two vertical strips of heavy-duty aluminum track shall be installed on the back wall.
- Cabinet shall be provided with access to the electrical component panel.

2.11 SIDE DOORSTEP

A recessed curbside doorstep shall be provided which is 11.5"D x 28"W. There shall be a drain hole and light gray Matéflex floor tile which is removable for cleaning purposes. Aluminum diamond plate kick panel shall be installed on the sides and face of the doorstep.

2.13E CAB TO MODULE PASSAGE

Shall be a pass-thru measuring 16"W x 12.5"H on the cab side, 16"W x 15"H on the module side.

2.14 WHEEL WELL LINERS

Wheel well liners made of formed aluminum shall be installed in the module wheel well openings.

2.15 ELECTROLYSIS PREVENTION

All external materials and fasteners shall be selected to prevent electrolysis and corrosion due to dissimilar materials and exposure to the elements. The module shall be painted before any exterior items (hinges, latches, door hold opens, etc.) are installed to provide an isolating film between dissimilar materials. Exterior fasteners used for direct connection to painted aluminum surfaces shall be coated with a corrosion inhibitor.

3 COATINGS AND FINISHES

3.01 MODULE FINISH PREPARATION

The module shall be seam sealed and all imperfections on aluminum surfaces of module shall be sanded smooth. The entire exterior shall be mechanically etched and washed with wax-and-grease-remover to ensure proper primer/sealant adhesion.

3.02 MODULE PRIMER

Module shall be sealed with a two-component, low VOC, direct-to-metal epoxy primer/sealant prior to applying the finish coat of acrylic urethane paint.

3.03 PAINT TYPE

Shall be Sherwin Williams acrylic urethane.

3.04X COLOR SCHEME

Base color: to match Race Red (G4-100871777)

The following items shall be sand-blasted and finished with textured black polyurea thermoplastic elastomer:

- *Recessed tow eye pockets (Section 1.02.08 related)*
- *Rear bumper (Section 4.01 related)*
- *Rock guards (Section 4.05 related)*
- *Rear kick panel (Section 4.06 related)*

The following items shall be sand-blasted and gloss-black powder coated:

- *Drip rails (Section 4.04 related)*
- *Fuel splash guard (Section 4.09 related)*
- *Perko exhaust cover (Section 5.20 related)*

The condenser bracket shall be painted Race Red (G4-100871777) to match the module (Section 5.17 related).

Stripe #1	Color:	White
	Size:	1.25"H
	Style:	Straight
	Material:	Scotchlite
	Location:	Sides of module, meeting chassis stripe
Stripe #2	Color:	White
	Size:	8.25"H
	Style:	Straight
	Material:	Scotchlite
	Location:	Sides of module, meeting chassis stripe with a 1.25" gap
Stripe #3	Color:	White
	Size:	1.25"H
	Style:	Straight
	Material:	Scotchlite
	Location:	Sides of module, meeting chassis stripe with a 1.25" gap

Stripe #4	Color:	3M Rigid Red #983-72 and 3M Fluorescent Yellow-Green #983-23
	Width:	6"H
	Style:	Diagonal stripes alternating between the two colors, Chevron
	Material:	Diamond Grade
	Location:	Rear of module, below drip rail, stopping short of the outboard corner radius (Includes rear passage doors, header above doors, and area outboard of doors.)

3.04.01X

CHASSIS COLOR

Chassis shall be OEM Race Red (PQ)

The back-of-cab insert shall be covered with black-painted polyurea thermoplastic elastomer.

The seven OEM tires/wheels including spare shall be removed from the vehicle and tires dismounted. Both sides of each wheel shall be sand blasted and gloss black powder coated.

Running boards shall be sand-blasted and finished with textured black polyurea thermoplastic elastomer.

Striping sizes and material to be confirmed at preconstruction meeting.

Stripe #1	Color:	White
	Size:	1.25"H
	Style:	Straight
	Material:	Scotchlite
	Location:	Sides of module, wrapping around front corner radius, to meet with chassis stripe

Stripe #2	Color:	White
	Size:	8.25"H
	Style:	Straight
	Material:	Scotchlite
	Location:	Sides of module, below Stripe #1, with a 1.25" gap

Stripe #3	Color:	White
	Size:	1.25"H
	Style:	Straight
	Material:	Scotchlite
	Location:	Sides of module, below Stripe #2, with a 1.25" gap

Reference photos from salesperson:



3.05X**DECALS**

Decal sizes and material to be confirmed at preconstruction meeting.

Streetside

Item #S1	Decal:	<i>Customer-supplied</i> Dept. Decal
	Size:	"H (TBD)
	Material:	Scotchlite
	Location:	Centered on cab door (bisected by white striping)

Item #S2	Decal:	<i>Customer-supplied</i> Dept. Decal
	Size:	"H (TBD)
	Material:	Scotchlite
	Location:	Side of module, upper

Curbside

Item #C1	Decal:	<i>Customer-supplied</i> Dept. Decal
	Size:	"H (TBD)
	Material:	Scotchlite
	Location:	Centered on cab door (bisected by white striping)

Item #C2	Decal:	<i>Customer-supplied</i> Dept. Decal
	Size:	"H (TBD)
	Material:	Scotchlite
	Location:	Side of module, upper

3.06**COMPARTMENT FINISH**

All compartments shall be sanded, etched, washed, primed, coated with textured polyurea thermoplastic elastomer finish and painted white with light gray splatter paint (G2-33631 Alt 2 / GLV-51748).

All shelves and trays shall be sanded, etched, washed, primed, and painted white with light gray splatter paint (G2-33631 Alt 2 / GLV-51748).

3.07**INTERIOR CABINETY FINISH**

All interior cabinetry shall be sanded, etched, washed, primed, coated with textured polyurea thermoplastic elastomer, and painted white with light gray splatter paint (G2-33631 Alt 2 / GLV-51748).

All drawers, shelves and trays shall be sanded, etched, washed, primed, and painted white with light gray splatter paint (G2-33631 Alt 2 / GLV-51748).

3.08**MODULE UPHOLSTERY**

Module upholstery material shall be Dove Gray Spradling Perform 60 seamless vinyl.

3.09**MODULE FLOORING MATERIAL**

Shall be Altro Transflor Meta Genome (#TFM2702) Slip-Retardant Sheet flooring providing durability, ease of maintenance and stain resistance. It shall contain a high concentration of microscopic aluminum oxide particles and colored quartz crystals suspended throughout the thickness with silicon carbide grains in the entire wear surface for slip-retardant performance. It shall have an overall thickness of 0.11" nominal. Flooring shall be manufactured for Wear Resistance to meet ASTM C 501, indentation resistance in accordance with ASTM F 1303 and ASTM F 970, Grade 1 standards, shall meet ASTM D 2047 Slip Retardant, ASTM F 970 Static Load, ASTM E648, CMVSS, FMVSS 302, CAN ULC S102.2 Fire Data Tests.

An insulated floor shall be installed over the 0.125" aluminum subfloor and shall be comprised of 0.75" thick polyiso insulation between 0.75" x 0.75" x 0.063" square tubing, covered with a 0.125" aluminum sheet.

Floor covering material shall be seamless and cove up the side walls a minimum of 5" as a seal.

3.10**COMPARTMENT LINING**

Compartment floors shall be lined with light gray Matéflex floor tile and all shelves with mat.

3.11**CABINET LINING**

Interior cabinet shelves shall be lined with easy sweep mats which are removable for ease of cleaning.

3.12**SURFACES AND FINISHES**

All patient compartment surfaces and finishes shall be impervious to soap, disinfectants, and water, to permit washing and sanitizing.

4.01X**STEP/BUMPER**

The rear bumper shall be a welded construction of 3" x 3" x 0.375" aluminum angle and 1.5" x 0.25" flat bar and shall be covered by 0.125" bright aluminum diamond plate. The center section, below the doors, shall have a hex-punched open flow design to prevent accumulation of water and snow and provide a 7" step. Both outermost ends shall be angled to prevent dragging of corners in high angle of departure areas. Diamond plate shall be formed on front and rear edges for channel-type strength, and a formed 0.090" aluminum closeout shall be welded to the underside of the bumper. The bumper shall be bolted directly to the chassis frame using high strength Grade 5 bolts. Bumper shall be easily removable and replaceable in case of damage. Bumper to be designed to accommodate a one-person-style cot.

A Rosco #BSSK1001 back-up sensor kit shall be installed, including four black flush-mount sensors in the rear bumper and a wireless transmitter in the rear wall of the module. A display unit shall be installed on the cab dash, near the A-pillar on the left side.

Rear bumper shall be sand-blasted and finished with textured black polyurea thermoplastic elastomer.

4.02X**RUB RAILS**

A Heavy Duty Black High-Density polymer rub rails shall be installed along the lower streetside and curbside edges of the module. Rub rails shall be approx. 2" tall and 0.75" thick. The rub rail will have rounded exposed edges and tapered ends. The rub rails shall be attached to the module using stainless-steel hardware.

Reference photo from 3966-1:

**4.03X****FENDER RINGS**

High grade weather-resistant industrial rubber fender rings with a rounded outer edge shall be installed on the module, following the full contour of the wheel well opening and projecting 2.5" from the module body.

4.04X**DRIP RAILS**

Extruded, anodized aluminum drip rails shall be installed the full length of the module front, rear, and sides near the roof, and passage door. Drip rails shall be installed with bonding tape and mechanical fasteners on each end that shall withstand exposure to the elements. They shall be finished with 45-degree angled ends to avoid hooking materials which brush against the vehicle causing damage.

Drip rails shall be sand-blasted and gloss-black powder coated.

- 4.05X ROCK GUARDS**
Bright aluminum diamond plate rock guards shall cover the front module corners, 24" up from bottom of module, 2.5" wrapped around the sides of module, and 15" across the front of the module.
Rock guards shall be sand-blasted and finished with textured black polyurea thermoplastic elastomer.
- 4.06X REAR KICK PANEL**
A bright aluminum diamond plate rear kick panel shall extend from the bottom edge of the module up to the bottom of the rear doors, full-width formed and wrapped 2.5" around the sides of the module.
Rear kick panel shall be sand-blasted and finished with textured black polyurea thermoplastic elastomer.
- 4.07 FUEL FILL**
A polished cast aluminum fill well shall be installed on the streetside of the module and be properly vented. Fill and vent hoses shall be installed and protected in accordance with the chassis bodybuilder recommendations.
The OEM DEF tank fill is located between the cab and module, streetside.
- 4.08 MODULE WINDOWS**
All module windows shall be dark-tinted, have black anodized aluminum frames, and be attached with screws for ease of replacement. The side passage door window shall be 18.75" x 18.75" with sliding glass, a positive catch, and a screen. The rear door windows shall be 18.75" x 18.75" fixed glass to prevent exhaust from entering the module.
- 4.09X FUEL SPLASH GUARD**
A stainless steel fuel splash guard shall be installed below the fuel fill.
Fuel splash guard shall be sand-blasted and gloss-black powder coated.
- 4.10 EXTERIOR CYLINDER STORAGE**
A black powder coated angled corner bracket shall be installed on aluminum track in Compartment #2, lower aft, for a *customer-supplied-and-installed* SCBA cylinder holder. A welded bracket, painted to match the compartment, and three ratcheting straps with UHMW stiffeners shall be installed on the aft wall for a *customer-supplied-and-installed* H or M-size cylinder shall be installed in Compartment #3.
- 4.16 REAR LICENSE PLATE**
A rear license plate holder and a Truck-Lite #15055 LED light with chrome housing shall be installed on the rear of the module, streetside lower above the kick panel.
A hidden unlock switch and two spacers shall be installed behind the license plate (Section 6.40 related).
- 4.27 STAIR CHAIR STORAGE**
A boot-shaped bracket shall be installed by BNW in Compartment #2, lower forward, for storage of a *customer-supplied-and-installed* stair chair.
- 4.34 AUTOMOTIVE UNDERCOATING SEAL**
The chassis and module underbodies (excluding the area above the fuel tank, driveline, and exhaust lines, per manufacturer's specifications) shall be sprayed with undercoating for reduced corrosion and added sound deadening.

5 **MODULE INTERIOR**

All interior hangers, supports, fasteners, latches, and hinges shall be of a near-flush-type design. The patient compartment shall be free of sharp projections. Exposed edges and corners shall be broken with a radius or protected with 1" high-density foam covered with heavy-duty vinyl color-matched upholstery.

5.01 **UPPER WALL COVERING**

The upper module interior walls shall consist of light gray, heavy-grade, 0.125" ABS vinyl panels attached to the wall structure with a closed-cell polyethylene foam tape coated on both sides with a permanent acrylic-based pressure-sensitive adhesive.

5.02A **HEADLINER**

The headliner shall be 0.125" aluminum which is sanded, etched, washed, primed, and coated with textured polyurea thermoplastic elastomer, and painted white with light gray splatter paint (G2-33631 Alt 2 / GLV-51748).

5.03 **HEAD PADS/CUSHIONS**

Head pads installed over all module access openings shall be 1.5" foam covered with heavy-duty seamless vinyl upholstery.

Head pads and seat backs for seating positions shall be 1.5" foam covered with heavy-duty seamless vinyl upholstery.

Seat cushions shall be 3" foam covered with heavy-duty seamless vinyl upholstery.

5.04B **LOWER WALL COVERING**

The squad bench sides and lower portion of the streetside wall shall be nonporous, color-coordinated material.

5.05 **GRAB RAIL**

One 75"L x 1.250"D stainless steel grab rail with three support brackets shall be securely mounted to roof structural framing running through centerline.

5.06 **ACCESS DOOR GRAB RAILS**

Each module access door shall have a 1.250"D L-style stainless steel grab handle which may also be used as an entry assist rail.

5.07X **IV HANGERS**

Two retractable dual IV hangers with stabilizers shall be surface-mounted in the ceiling over the primary cot: one forward (not shown in drawings), and one aft, streetside of the grab rail.

Two IV hooks shall be mounted: one between streetside Cabinets #2 and #3, and one between Cabinets #4 and #5.

5.08D **COT MOUNT**

A *customer-supplied* Stryker Power-LOAD #6390 cot fastener system and safety hook shall be installed (Section 8.02 related).

The Power-LOAD anchor assembly shall be installed to position the aft end of the cot 11" forward of the rear doors.

5.10**ATTENDANT SEAT**

A Wise #1637 rear-facing high-back bucket seat, upholstered with heavy grade vinyl, Dove gray, shall be installed at the head of the cot position and provide easy access to all Action Area #8 wall controls and outlets, and to the patient. Seat shall swivel, have a three-point automatic locking retractor seat belt, and be securely anchored on a #1934 swivel base.

5.11X**OXYGEN SYSTEM**

The entire oxygen system shall be assembled with certified oxygen hose (1000 PSI burst strength) with brass fittings, be pressure tested, and certified. A 50 PSI regulator shall be included, a bulkhead connector shall be installed in the ceiling of Compartment #3, and one oxygen tank wrench shall be attached to the compartment wall with hook-and-loop tape.

Three Ohio-type outlets shall be installed:

- One in Action Area #8
- One on the curbside wall above the squad bench

One recessed oxygen outlet with 0 – 25 LPM constant flow regulator with barbed outlet shall be installed in the ceiling, curbside, between the grab bar and the aft most attendant light with the dial facing aft (different than shown in drawings).

5.12**SUCTION PUMP**

The unit shall have an electric pump as the source of suction, installed in HVAC Cabinet #17, and be vented to the outside of the vehicle under the module body. The pump shall be controlled by an on/off switch labeled "SUCTION" in the attendant control panel (Section 6.13 related).

5.13**SUCTION COLLECTOR**

A Rico model #RS4X-1001B suction regulator and wall-mount bracket with a 1200cc Rico disposable canister shall be installed in Action Area #8.

5.14A**SEAT BELTS**

Black DOT-compliant seat belts shall be installed at each seating position. One four-point single-buckle energy absorbing seat belt with below-the-bench retractors shall be installed on the CPR Seat #10. Two black four-point, single-buckle energy-absorbing seat belts with below-the-bench retractors shall be installed on the Curbside Squad Bench #16 for sit-up occupants. Three additional automatic locking retractors with three lower seat belt buckle ends shall be set up for use with stretcher patients. The attendant seat shall have a three-point, single-buckle seat belt.

5.16**INSULATION**

The module side, ends, roof, doors, and floor shall be insulated to enhance the interior environment and to restrict heat, cold, and external noise from entering the module. The insulation shall be a non-settling foam plank material of 1.5", or 0.75" thickness depending upon location and available space.

Roof, doors, wall, and floor insulation shall be polyisocyanurate.

A 3" wide, 60-mil, closed cell polyethylene foam tape shall be used as a thermal break on the inside surface of the wall tubes.

5.17X**MODULE CLIMATE CONTROL SYSTEM**

The module HVAC system shall incorporate a combination heating/air conditioning unit with 43,300 BTU/hr. heating and 32,000 BTU/hr. cooling capacity. The unit shall have a 580 CFM fan, two adjustable air conditioning discharge louvers, and controls independent of the cab system. A 12 VDC booster pump shall be installed to optimize the heating capacity in the module. A return air path with open area equal to at least twice the blower outlet area shall be incorporated into the evaporator closeout.

The module system shall be controllable by a digital thermostat installed on the Action Area #8 wall.

Four vents shall be installed in a vertical plenum on the aisle side of right front stack, spaced evenly.

An auxiliary compressor shall be installed on the OEM engine, and a 67,000 BTU/hr. auxiliary dual fan condenser shall be added to the front of the module in an aluminum bracket, painted to match the module.

Two Whelen #NP6BB LED alley lights shall be installed. One on each side of the condenser bracket at a 45-degree angle (Section 6.30.04 related).

A Rigid light bar (#132313) shall be installed on the front of the condenser bracket between the alley lights (Section 6.30.04 related).

5.18**EXTERNAL AIR INTAKE**

To supplement heated or cooled air with fresh air, an external air intake shall be installed on the side of the module. The intake shall consist of an opening protected by an aluminum vent cover. The interior chamber of the intake shall be made of aluminum and be formed to prevent the collection of moisture. Washable filter media shall be installed in the intake chamber.

5.19**AIR RETURN**

A return air path with an open area equal to at least twice the blower outlet area shall be incorporated into the evaporator closeout.

5.20X**EXHAUST VENT**

A motor-powered exhaust vent with a chrome Perko cover shall be installed in the streetside rear corner of the module.

A switch labeled "VENT" shall be installed in the attendant control panel to turn the exhaust vent on/off (Section 6.13 related).

Perko cover shall sand-blasted and gloss-black powder coated.

5.23A**WHITE MARKER BOARD**

A 20"W x 20"H framed white marker board shall be installed curbside of the pass-thru with double-stick tape, adhesive, and a fastener in each corner.

5.24**CLOCK**

An atomic-controlled clock shall be installed on the face of Electrical Cabinet #18. The clock shall be LCD display and show hours (12/24 selectable), minutes, seconds, date, day, and temperature. Clock is powered by two AA alkaline batteries.

5.26B**SHARPS/HAZARDOUS WASTE CONTAINER**

One Becton Dickinson 8.2-Qt. sharps container and one 7-Qt. waste container shall be installed at the aft end of the Action Area #8 countertop, with a hinged clear polycarbonate cover with a finger hole. A 5-Qt. Sage #85131 biohazard sharps container shall be installed below the oxygen window on the aft wall of the curbside bench. A 7-Qt. biohazard waste container shall be installed with a stainless steel bracket and mounted on the rear passage door. A 5-Qt. Sage #85131 biohazard waste/sharps container and a 7-Qt. waste container shall be installed on the curbside squad bench end bar (Section 5.34 related).

5.29**OXYGEN WINDOW**

A 6" x 11" clear polycarbonate oxygen window with knob and self-closing hinges shall be installed on the aft wall of the curbside squad bench.

5.31**INTERIOR FIRE SUPPRESSION**

An ABC 5 lb fire extinguisher with an Amerex #861H SAE-J3043 compliant bracket shall be installed in Cabinet #15.

5.32X**GLOVE BUTLERS**

Storage for three glove boxes shall be provided in Cabinet #14.

Storage for three glove boxes shall be provided behind the cup holder in the driver's console (Section 6.09 related).

5.34X**BENCH RESTRAINT**

A net system shall be installed at the forward end of the curbside squad bench. The net system shall be constructed of black 2" webbing and shall be easily detached for cleaning or replacement. A short buckle end shall be used to make the upper net connection beneath the glove box storage cabinet.

A removable bar bench restraint shall be provided and mounted on the forward end of the curbside squad bench. The bar shall be 1.25"D satin stainless steel tubing with 3" radius bends. The upper removable bar section shall be 15" across and 21" high and have welded stainless steel brackets to hold a 5-Qt. Sage #85131 biohazard waste/sharps container and a 7-Qt. waste container. One each shall be provided. The bar shall be mounted in 1.25" satin finish stainless steel post bases attached to the front of the squad bench.

5.35B**INTERIOR CYLINDER STORAGE**

Tip-out latching storage for two *customer-supplied-and-installed* "Jumbo D" oxygen cylinders shall be provided in Cabinet #15, with a wedge-shaped stainless steel spring to prevent cylinder rattling.

5.36C**MEDICATION SAFE**

A *customer-supplied* Wi-Fi enabled Knox MedVault 2.5 medications safe with "rubber-ducky" antenna shall be surface-mounted in the left front sack as Cabinet #20 (Section 8.02 related). MedVault shall be wired battery hot.

ELECTRICAL

All added body and chassis electrical equipment shall be served by circuits separate and distinct from the vehicle chassis circuits. All vehicle wiring shall be copper and conform to all SAE J1128 requirements. The wiring shall be colored, numbered, or function coded every 3" for permanent identification and correspond with the vehicle schematics. Solderless, insulated connectors shall be used. Slotted Panduit-style wiring duct shall be used in electrical component module to ensure air circulation throughout power component wiring. The wiring shall be routed in conduit or looms and wiring shall be secured to the underbody or frame with insulated metal cable straps. All power distribution cabling shall be covered with a protective split loom. Where wiring passes over the exhaust, a heat shield shall be installed. The electrical component module shall be equipped with positive locking plugs to provide easy disconnect for remount or repair of body. All wiring devices, switches, outlets, etc., except circuit breakers, shall be rated to carry 125% of the maximum ampere load for which the circuit is protected.

The vehicle electrical system shall be tested and certified to AMD 005 requirements.

6.01 ELECTRICAL LOAD DEVICES

Body electrical wiring shall utilize overload protective devices of the automotive-type circuit breaker. In addition, one single pole, 20-amp circuit breaker shall be provided for future use. The circuit breakers, relays, and other electrical items shall be included as part of the enclosed electrical component module installed in Electrical Cabinet #18.

6.02 VOLTMETER/AMMETER

A single display voltmeter/ammeter shall be installed on the side of the console, driver's side, which simultaneously displays voltage and alternator current when the ignition is on (Section 6.09 related). Display flashes to indicate low voltage.

6.04 IGNITION CONTROL

Chassis electrical circuits shall be controlled by the ignition switch as provided by the OEM chassis manufacturer. The auxiliary chassis-related functions shall be powered by one 100-amp continuous duty solenoid, triggered by the chassis ignition.

6.05A MODULE POWER

Module power shall be controlled by a driver's console-mounted switch labeled "MODULE DISC." which activates an InPower #SSC42-275 solid state contactor (Section 6.09 related). An ignition interlock shall disconnect module power 15-20 minutes after the vehicle's ignition is turned off. The interlock shall also allow module power to be reactivated independently for 15-20 minutes by cycling the ignition switch.

6.06 WIRING ACCESS

All cabinets and compartments shall have removable panels as needed to access wiring harnesses and hoses.

6.07 BACK-UP ALARM

An SAE J994-compliant self-adjusting back-up alarm shall be installed, with a momentary disable switch labeled "BACK-UP DISABLE" in the driver's console (Section 6.09 related). If disabled while in reverse, the back-up alarm shall automatically reset when shifted out of reverse.

6.08

SERVICE LOOP

A 6" service loop of wire or harness shall be provided at all electrical components, terminals, and connection points.

6.09X

DRIVER'S CONSOLE/MAP BOX

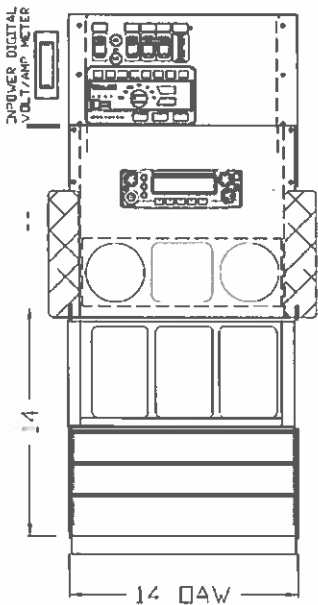
A custom driver's console made of black-powder-coated formed aluminum shall be installed between the seats. It shall have:

- A digital voltmeter on the side of the console, facing the driver
- A *customer-supplied* Motorola 8500 Radio head, speaker, and mic. (Section 6.18 related)
- A custom cup holder plate (3.625" dia streetside, 3.625"dia curbside)
- Two adjustable armrests
- A map holder with mill-finished aluminum dividers
- Custom glove box storage, aft of the cup holder
- A faceplate with the following layout:

1.	Passage Compt. D/O Lights	2.	3.	4.	5.
Module Disc.		Blank	Howler	Back-up Disable	USB A/C

WeCanX #CCTL6 Core controller (Section 6.30.09 related)

Customer-supplied Motorola 8500 Radio head (Section 6.18 and 8.02 related)



**CONSOLE
PROPOSAL
DRAWING**

6.10**SWITCHES**

Switches installed in the driver's console and attendant control panel shall be rocker-type and permanently marked by function.

6.12**DOOR AJAR WARNING LIGHTS**

A flashing LED light with a Red Lens shall warn the driver of an open module passage door, and a flashing LED light with an Amber Lens shall warn the driver of an open module compartment door. The lights shall flash only if the ignition is on. Lights shall be installed on the driver's console.

6.13**ATTENDANT CONTROL PANEL**

A six-switch control panel shall be installed on the Action Area #8 wall with the following switch layout:

1.	2.	3.	4.	5.	6.
DOME Hi-Off-Lo	DOME Hi-Off-Lo	SUCTION	VENT	ATTENDANT LIGHT	USB A/C

6.14**CABINET LIGHTING**

The wall area below Cabinets #1-4, #6, #12, and #13 shall be lighted utilizing under-cabinet LED strip lighting with an on/off switch labeled "ATTENDANT LIGHT" in the streetside attendant control panel. An automatic cabinet light shall be installed in the Electrical Cabinet #18.

6.15A**STEP LIGHT**

A Whelen #3SC0CDCR Clear Lens Clear 3" LED light shall be installed on the forward wall of the curbside door stepwell.

6.16**MODULE INTERIOR LIGHTING**

Shall be designed to keep vehicle height to a minimum without interfering with the structural integrity of the roof. Module interior lighting shall consist of six dual intensity Whelen #80C0EHCR LED recessed lights - one bank of three lights shall be positioned toward streetside and three lights toward curbside. There shall be a switch for each bank of lights in the attendant control panel, each labeled "DOME HI-OFF-LO".

6.17**BASIC EXTERIOR LIGHTING**

Basic lighting shall include headlights, parking lights, directional signal lights, tail and stop lights, license plate light, back-up lights, hazard lights, identification lights, clearance lights, and side marker lights as required by FMVSS 108.

Module identification lights, clearance lights, and side marker lights, unless included on a lightbar, shall be Truck-Lite LED Model 36.

Rear and side reflex reflectors shall be installed in accordance with FMVSS 108 requirements.

Rear stop/tail, turn and back-up lights shall be Truck-Lite Model 45 series LED lights, installed in the rear kick panel, pattern from outboard in: red stop/tail light, amber turn signal, and clear back-up light. The back-up lights shall activate automatically when the vehicle is placed in reverse.

A Whelen #M62BTT Red Len Red LED light shall be included in the rear light bar, wired as a third break light (Section 6.30.02 related).

6.18**COMMUNICATIONS EQUIPMENT**

The customer shall be responsible for powering up and tuning of any radio equipment.

Item #1

Description: One *customer-supplied* Motorola 8500 radio transceiver with two remote heads, two auxiliary speakers, two mics, and one antenna (Section 8.02 related).

Locations:

- Transceiver in Electronics Cabinet #24
- One remote head and mic on the driver's console
- One aux. speaker in the cab (location to be determined)
- One remote head, aux. speaker, and mic. in Action Area #8
- Antenna on module roof (Section 6.19.01 related)

Additional Instructions: All connections shall be made, including antenna, antenna cables, battery power or ignition power, and grounds. Prior to powering up of the module, all in-line fuses of radio equipment shall be removed and secured to their fuse holders.

6.19**ANTENNA MOUNTS AND CABLES**

Two Larsen 27 MHz to 6 GHz NMO universal antenna mounts with RG-58U low loss, dual shield cables with FME male connectors shall be installed on the module roof. The antenna cables shall terminate in Electronics Cabinet #24. Two mini-UHF style adapters shall be shipped loose (Section 8.01 related). A rain cap shall be installed on each base that does not have an antenna installed.

6.20**BLOCK HEATER**

A block heater, with circuit breaker in the 120 VAC Power Box, shall be wired to the 120 VAC shorepower system.

6.21**120 VAC/SHORELINE CIRCUIT BOX**

Utility power shall be furnished from 120 VAC shorepower via a Kussmaul 20-amp Super Auto-Eject plug with a Red cover on a stainless steel plate with a green indicator light installed on the streetside forward corner of the module and distributed via a formed aluminum power box with an easily removable cover, recessed into the forward wall of Compartment #1.

Circuit breakers shall be installed for overcurrent protection and circuit isolation:

- Block Heater (15 A)
- Inverter (20 A)
- Receptacles (15 A)

All exposed receptacles shall be ground fault circuit interrupting (GFCI) and shall have a power on indicating light.

Five interior 120 VAC GFCI duplex receptacles shall be installed:

- One in Cabinet #7
- One in Action Area #8
- One in Cabinet #19
- One in Cabinet #21
- One in Cabinet #23

6.22**BATTERY GROUNDS**

In addition to OEM chassis grounds, the following ground circuits shall be added to reduce RF interference:

- A minimum 4 ga. ground cable from the power component panel to the chassis frame.
- Two braided ground straps with soldered ends from the module body to the chassis frame.

6.23**BATTERY CHARGER**

A 60-amp battery charger shall be provided as part of the Samlex Pure Sine 1200-watt inverter system (Section 6.31 related).

6.25**12 VDC POWER SUPPLY**

Two 12 VDC, 15-amp power point receptacles shall be installed:

- One in Action Area #8
- One in Cabinet #23

Three USB dual charging ports shall be installed:

- One round Blue Sea dual port with cover in Action Area #8
- One Kussmaul dual port A/C in the Action Area attendant panel (not shown in drawings)
- One Kussmaul **dual USB-A/C** switch insert style charging port with single switch bezel in the driver's console.

All 12 VDC power point receptacles, USB charge ports, 12 VDC charging circuits, electric air compressors, and cool cabinets, if present, shall be powered from a 12 VDC auxiliary bus. An InPower LVD20-100-SPC540 low voltage disconnect switch shall deliver power to the auxiliary bus only when the supply voltage to the vehicle batteries is at or above 13.0 VDC.

6.26**COMPARTMENT LIGHTING**

LED strip lighting shall be installed in each outside compartment and shall be activated by the respective compartment door switch.

6.27**EXTERIOR DOOR SWITCHES**

Shall be 1/2" mechanical door switches.

6.30X**EMERGENCY WARNING SYSTEMS**

Emergency lighting shall be controlled by the Whelen CenCom CORE siren. Each light head/Function (if multi-function capable light) shall be individually wired directly to an assigned output on the Core controller. Programming of siren and emergency lighting to be determined at the preconstruction meeting.

When vehicle is placed in park, all lights shall switch to a DVI flash pattern (Section 6.30.09 related).

6.30.01X**FRONT FLASHERS**

Six Whelen M9 Series flashers with **black** flanges shall be installed on the upper front of module, pattern curbside to streetside:

Curbside: #M9R Red Lens Red LED flasher
 #M9C Clear Lens LED Flasher
 #M9R Red Lens Red LED flasher
Center: #794H Opticom (Section 6.48 related)
 #M9R Red Lens Red LED flasher
 #M9C Clear Lens LED Flasher

Streetside #M9R Red Lens Red LED flasher

The front flashers shall be controlled by Whelen CenCom CORE siren controller via WeCanX control cable, and activated by the #CCTL6 control head mounted on the driver's console (Section 6.30.09 related). Opticom shall disable when vehicle is placed in park (Section 6.48 related).

6.30.02X**REAR UPPER FLASHERS**

Six Whelen M9 Series flashers with **black** flanges shall be installed on the upper rear of the module, pattern curbside to streetside:

Curbside: #M9RC Red Lens Red LED flasher
 #M9BC Clear Lens LED flasher
 #M9RC Red Lens Red LED flasher
Center: #M62BTT Red Lens Red LED third brake light (Section 6.17 related)
 #M9RC Red Lens Red LED flasher
 #M9BC Clear Lens LED flasher

Streetside: #M9RC Red Lens Red LED flasher

The rear flashers shall be controlled by Whelen CenCom CORE siren controller via WeCanX control cable, and activated by the #CCTL6 control head mounted on the driver's console (Section 6.30.09 related).

6.30.03X**FLASHERS**

Four Whelen #M9BC Clear Lens Blue LED flashers with **black** flanges shall be installed two each on the curbside and streetside of the module in upper corners.

Two Whelen #M9A Amber Lens Amber LED flashers with black flanges shall be installed on the rear of the vehicle at window height.

The red flashers shall be disabled when the vehicle is shifted into park.

Lights shall be controlled by the Whelen CenCom CORE siren controller via WeCanX control cable, and activated by the #CCTL6 control head mounted on the driver's console (Section 6.30.09 related).

6.30.04X**SCENELIGHTS**

Four Whelen #M92SLC Scene Super-LED light heads shall be mounted, two each on the curbside and streetside of the module in the upper corners, inboard of the flashers. The curbside passage door shall activate the curbside scene lights.

Two Whelen #NP6BB LED alley lights shall be installed. One on each side of the condenser housing at a 45-degree angle.

A Rigid light bar #132313 shall be installed between the alley lights on the front of condenser bracket.

The scene lights shall be controlled by the Whelen CenCom CORE siren controller, and activated by the #CCTL6 control head mounted on the driver's console (details to be confirmed at preconstruction meeting, Section 6.30.09 related).

6.30.06X**INTERSECTION LIGHTS**

Four Whelen #WIONSMCR Clear Lens Red Super-LED flashers with black housings shall be installed, one on each cab fender and one above each module wheel well.

Lights shall be controlled by the Whelen CenCom CORE siren controller via WeCanX control cable, and activated by the #CCTL6 control head mounted on the driver's console (Section 6.30.09 related).

6.30.08X**GRILLE LIGHTS**

One Whelen #WIONSMCR Clear Lens Red and one #WIONSMCB Clear Lens Blue LED flasher shall be installed on the OEM grille, upper. The red flasher shall be installed streetside, and blue shall be installed curbside.

Two Whelen #WIONSMC clear lens clear LED lights shall be installed on the lower grille, below the colored flashers.

Lights shall be controlled by the Whelen CenCom CORE siren controller via WeCanX control cable, and activated by the #CCTL6 control head mounted on the driver's console (Section 6.30.09 related).

6.30.09X**SIREN (Programming of siren and emergency lighting to be determined at preconstruction meeting).**

A Whelen CenCom CORE siren, including a #C399 controller module, WeCanX #CCTL6 Control head, CEM16 Expansion Module and a #C399K7 CANport OBDII Connection kit. The WeCanX #CCTL6 control head shall be installed in the driver's console. The standard features shall include eight push buttons, a four-position slide switch (off, 1, 2, and 3), a seven-position rotary knob control head, and a manual button. The siren's hands free function shall operate through the OEM horn ring circuit when the sirens rotary selector is in the HF position and Slidebar is in position #3. The #C399 siren controller module and expansion module shall be installed in Electrical Cabinet #18.

Slide Bar functionality as follows:

- Position 1:

- Position 2:

- Position 3: All of emergency lighting, Opticom, and siren tone or siren hands free enable.

The following switches will be used in the CenCom Core Siren:

- 1.SCENE LEFT and left flood

- 2.SCENE RIGHT and right flood

- 3.SCENE REAR

- 4.SCENE FRONT

- 5.PRE-EMPT (On/Off)

- 6.ALARM CUT

- 7.Blank

- 6.30.10C SIREN SPEAKERS**
Two Whelen #SA315P 100-watt speakers with mounting brackets and punched North Star stainless steel grilles shall be installed in the OEM bumper.
- 6.31 INVERTER**
A Samlex 1200-watt pure sine wave inverter with a 60-amp battery charger shall be installed on the back wall of Electronics Cabinet #24, mounted to an aluminum plate. An EVO-RC Plus inverter remote control panel shall be installed on the Action Area #8 wall. The inverter shall be configured to turn on and off with ignition.
- 6.35 FLUID WARMER**
A 120 VAC fluid warmer with a 4" surround shall be installed in Cabinet #19. The warmer shall be thermostatically controlled at 95 to 115 degrees F. Space for 10 one-liter bags of fluids shall be provided.
- 6.40 ELECTRIC DOOR LOCKS**
Electric door locks shall be installed on all compartment and module passage doors. Two lock/unlock switches shall be installed in the module: one on the rear curbside passage door, and one on the curbside passage door. The door locks for the cab and module shall be interconnected, to allow all doors to be locked/unlocked from either the cab or module. A hidden unlock switch shall be installed behind the license plate on the rear of the module.
- 6.43X GROUND LIGHTS**
Six Whelen #M4V2 LED intersection/ground lights with brackets shall be installed:
Exact locations to be determined at preconstruction meeting.
- One under each cab running board
 - One under Compartment #1
 - One under the curbside passage door
 - Two under the rear bumper, outboard
- Lights shall activate as needed when vehicle is placed in park. Lights shall also be controlled by Whelen CCTL6 control head on the driver's console.
- 6.46 AUDIO/VIDEO EQUIPMENT/BACK-UP CAMERA**
Item #1
Description: A Zorg wedge-style surface-mounted back-up camera shall be installed.
Location: Above the rear passage doors
Additional Instructions: Camera shall be plugged in at the end of the chassis frame and shall automatically show on the OEM in-dash screen when the vehicle is placed in reverse.
- 6.47 BACK-UP SENSORS**
A Rosco #BSSK1001 back-up sensor kit shall be installed, including four black flush-mount sensors in the rear bumper and a wireless transmitter in the rear wall of the module. A display unit shall be installed on the cab dash, near the A-pillar on the left side.
- 6.48X TRAFFIC SIGNAL PREEMPTION**
A GTT #794H Opticom traffic preemption emitter shall be flush-mounted in a GTT #798 bezel mounting kit on the front of the module between the upper flashers. The Opticom shall be controlled by the Whelen CenCom CORE siren controller via WeCanX control cable, and activated by the #CCTL6 control head mounted on the driver's console. Opticom shall disable when the park brake is applied.

7.01**OWNERS MANUAL**

Shall be provided with the vehicle and shall include the following items:

- Braun Northwest Contact Information
- Warranties
- Service and Operations Manual
- Electrical Drawings
- Parts list
- Specifications and Drawings
- Certifications
 - AMD 005 Low Voltage Electrical System Test
 - AMD 015 Ambulance Main Medical Gas System Test
 - AMD 021 Aspirator System Test
- Product Manuals
- Second OEM chassis key

7.03**LABELS**

The following labels shall be provided:

Label Description	Location
Braun Northwest Paint Label	Inside of the electrical cabinet door
FMVSS Certification Label	Adjacent to the chassis OEM stickers, typically on the B pillar (or inside of the electrical cabinet door if there is not room on the B pillar)
Tire and Loading Information Label (for under 10k GVWR only)	
Must be Seated and Belted	Visible from each seating position
No Smoking/Oxygen Equipped	One each in cab and patient compt.
Overall Height and GVWR	Visible to the driver while seated
Medical Gas Test Certification	Near the medical gas cylinder
Shorepower Inlet Rating	Near the shorepower inlet
Line Voltage Receptacle Rating	At each receptacle

8 MISCELLANEOUS EQUIPMENT

8.01 LOOSE EQUIPMENT

The following equipment shall be shipped loose with the vehicle:

- Touch-up paint, one bottle each:
 - To match Race Red (G4-100871777)
 - White (G2-33631 Alt 2)
 - Light Gray (GLV-51748)
- Spare tire & wheel
- One 20 A cord end for shoreline
- Two mini-UHF style adapters
- Two compartment keys, J236

8.02 CUSTOMER SUPPLIED EQUIPMENT

The customer shall provide the following equipment and have delivered to Braun Northwest within 30 days of the preconstruction meeting:

- Motorola 8500 transceiver, two radio heads, speakers, and mic.
- Stryker Power-LOAD #6390 cot fastener system and safety hook
- Knox MedVault 2.5 medications safe with "rubber-ducky" antenna
- Four department decals

* * * * *



North Lyon County Fire Protection District

195 East Main Street

Fernley, Nevada 89408

District Office (775) 575-3310 District Fax (775) 575-3314

www.northlyonfire.org

Brian Bunn, Interim Fire Chief

Directors

Paul Murphy

Mike Toombs

Harry Wheeler

Jay Rodriguez

Debbie Skinner

STAFF REPORT

Board Meeting Date: November 14, 2024

DATE: November 14, 2024
TO: North Lyon County Fire Protection District Board of Directors
FROM: Brian Bunn, Interim Fire Chief
SUBJECT: Recommendation to adopt North Lyon Fire as our trade name and do business as North Lyon Fire, while maintaining North Lyon County Fire Protection District as our legal business name. **FOR POSSIBLE ACTION**

SUMMARY

This item is to adopt North Lyon Fire as our trade name.

PREVIOUS ACTION

No previous action.

BACKGROUND

North Lyon County Fire Protection District has been our legal business name since our inception. Formally rebranding and "doing business as" North Lyon Fire is simply easier to communicate with our external stakeholders and the public we serve.

Our badging and uniforms currently depict North Lyon Fire. Updating a trade name would include changes to our letterhead, forms, social media accounts, and website.

FISCAL IMPACT

With badging and uniforms already expressing North Lyon Fire, there would be no fiscal impact as all remaining rebranding being completed in-house.

PEOPLE FIRST

North Lyon County Fire Protection District is an Equal Opportunity Employer



North Lyon County Fire Protection District

195 East Main Street

Fernley, Nevada 89408

District Office (775) 575-3310 District Fax (775) 575-3314

www.northlyonfire.org

Brian Bunn, Interim Fire Chief

Directors

Paul Murphy

Mike Toombs

Harry Wheeler

Jay Rodriguez

Debbie Skinner

RECOMMENDATION

Staff recommends the Board of Fire Directors adopt North Lyon Fire as our trade name and do business as North Lyon Fire, while maintaining North Lyon County Fire Protection District as our legal business name.

POSSIBLE MOTION

Should the Board agree with the staff's recommendation, a possible motion could be:

"I move to approve and adopt North Lyon Fire as our trade name and do business as North Lyon Fire, while maintaining North Lyon County Fire Protection District as our legal business name."

PEOPLE FIRST

North Lyon County Fire Protection District is an Equal Opportunity Employer



MEMORANDUM

November 14, 2024

To: Board of Fire Directors
North Lyon County Fire Protection District

From: Brian Bunn, Interim Fire Chief

Re: Chief's Report for November 2024

1. First Due Software

First Due software continues to evolve. ePCR and NFIRS are up and running great. Our responder module is still not up and running as there is no CAD link from dispatch. I had a dispatch meeting with Lt. Willey from the LCSO and all Lyon County Fire Chief's. LCSO is diligently working to complete the CAD link as well as getting full fire CAD up and running in 2025. It has come to my attention that fire CAD has been kicked aside for many years, but Sheriff Pope has given his support to complete fire CAD with AVL. This will greatly reduce our response times, improve our safety, and reduce the airtime for priority traffic.

2. City of Fernley

I continue to have meetings with the City of Fernley in an effort of the city paying their fair share for emergency response. Mayor McIntyre has given me his verbal support in the city providing revenues for our emergency services. Mayor McIntyre intends to schedule me with counsel during their Senior Staff meetings so I can educate counsel prior to the Mayor placing the request on an agenda.

3. Vacancies

Former Reserve Firefighter York has accepted a full-time position with the District. The District has one remaining Paramedic Firefighter vacancy, and that position will fly next week.

4. Employee Recognition

Captain Mendoza, Captain McCoy, and Firefighter Chandler.



Darin Balaam, Sheriff

WASHOE COUNTY
SHERIFF



Thursday, October 24, 2024

Dear Chief Bunn,

I would like to recognize three of your Lyon County crew members who I encountered during the Davis Creek fire. As I am sure you are aware, this fire influenced our community with its potential for damage. Luckily through the efforts of many, a bigger disaster was avoided.

The Holy Spirit Catholic Mission — which had the only Latin Mass in northern Nevada — was one of the structures destroyed when the Davis Fire ripped through Washoe Valley on Saturday, September 8th. The church, built in 1978, was leveled along with several homes and other structures along old U.S. 395 in New Washoe City.

On Monday, Sheriff Balaam, along with parishioners returned to find the property reduced to rubble. They arrived to find your crew, tired and tending to the smoldering church. They explained to your crew, they were interested in retrieving some items from the church safes, including the tabernacle. Your crew not only assisted but helped us safely recover some valuable artifacts from inside the safes. They used proper tools and techniques to facilitate the opening of three safes in the rubble.

Later during the event, I ran into the same crew manning a hotspot, which later turned out to be critical in stopping the progress of the fire. They continued working diligently while providing continuous updates.

Chief, I would like to recognize the following, for their outstanding service.

Captain Joe Mendoza
Captain JT McCoy
Firefighter Josh Chandler
North Lyon Fire Engine 62

Respectfully,

A handwritten signature in black ink, appearing to read "D. Balaam".

Darin Balaam
Sheriff



Brian Bunn
Fire Chief

COMMENDATION

Presented to Firefighter Chandler

WHEREAS, it is common occurrence for our District to respond to neighboring jurisdictions to assist when requested, and,

WHEREAS, on September 7, 2024, North Lyon Fire Engine 62 responded to the initial request from Truckee Meadows Fire, for a vegetation fire in the area of Davis Creek, and,

WHEREAS, Engine 62 crew was engaged in securing post fire damage in and around the Holy Spirit Catholic Church that was destroyed from the Davis Fire, and,

WHEREAS, Engine 62 crew was instrumental in opening three safes to retrieve important contents, including the tabernacle, and,

THEREFORE, LET IT BE KNOWN, that Captain Mendoza, Captain McCoy, and Firefighter Chandler are hereby commended for extraordinary diligence, where their actions successfully recovered the Holy Spirit Catholic Church tabernacle, and whose actions provide an exemplary attitude for service.

Signed this day, November 14, 2024

Brian Bunn
Fire Chief

North Lyon County Fire Protection District
195 E Main St • Fernley, Nevada 89408
Office 775.575.3310 Fax 775-575-3314



Brian Bunn
Fire Chief

COMMENDATION

Presented to Captain Mendoza

WHEREAS, it is common occurrence for our District to respond to neighboring jurisdictions to assist when requested, and,

WHEREAS, on September 7, 2024, North Lyon Fire Engine 62 responded to the initial request from Truckee Meadows Fire, for a vegetation fire in the area of Davis Creek, and,

WHEREAS, Engine 62 crew was engaged in securing post fire damage in and around the Holy Spirit Catholic Church that was destroyed from the Davis Fire, and,

WHEREAS, Engine 62 crew was instrumental in opening three safes to retrieve important contents, including the tabernacle, and,

THEREFORE, LET IT BE KNOWN, that Captain Mendoza, Captain McCoy, and Firefighter Chandler are hereby commended for extraordinary diligence, where their actions successfully recovered the Holy Spirit Catholic Church tabernacle, and whose actions provide an exemplary attitude for service.

Signed this day, November 14, 2024

A handwritten signature in black ink, appearing to read "Brian Bunn", written over a horizontal line.

Brian Bunn
Fire Chief

North Lyon County Fire Protection District
195 E Main St • Fernley, Nevada 89408
Office 775.575.3310 Fax 775-575-3314



Brian Bunn
Fire Chief

COMMENDATION

Presented to Captain McCoy

WHEREAS, it is common occurrence for our District to respond to neighboring jurisdictions to assist when requested, and,

WHEREAS, on September 7, 2024, North Lyon Fire Engine 62 responded to the initial request from Truckee Meadows Fire, for a vegetation fire in the area of Davis Creek, and,

WHEREAS, Engine 62 crew was engaged in securing post fire damage in and around the Holy Spirit Catholic Church that was destroyed from the Davis Fire, and,

WHEREAS, Engine 62 crew was instrumental in opening three safes to retrieve important contents, including the tabernacle, and,

THEREFORE, LET IT BE KNOWN, that Captain Mendoza, Captain McCoy, and Firefighter Chandler are hereby commended for extraordinary diligence, where their actions successfully recovered the Holy Spirit Catholic Church tabernacle, and whose actions provide an exemplary attitude for service.

Signed this day, November 14, 2024

Brian Bunn
Fire Chief

North Lyon County Fire Protection District
195 E Main St • Fernley, Nevada 89408
Office 775.575.3310 Fax 775-575-3314